



VMRD

PO Box 502, Pullman, WA 99163 USA

Telephone: + 1 (509) 334-5815

Fax: + 1 (509) 332-5356

E-mail: vmrd@vmrd.com

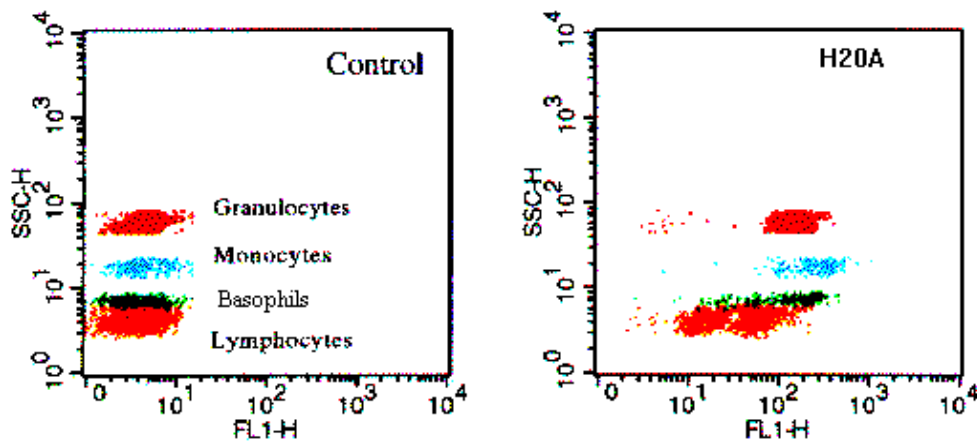
Web site: <http://www.vmrd.com>

Certificate of Analysis

Monoclonal Antibody

Cell Line: H20A
Specificity: CD18
Isotype: IgG₁
% Labeled PBMC: 100
Species Reactivity: Swine, horse, cat, dog, mink, human, rabbit, llama, cynomolgus or rhesus (polymorphic in swine); does not react with cattle, goat, sheep, chicken, owl or guinea pig.

Known Applications: Flow cytometry, immunohistochemistry, cell function.



Description and Handling: This monoclonal antibody is produced as mouse ascites fluid, clarified by centrifugation, and filtered through a 0.2 μ M filter. The concentration is 1.0 mg/ml in phosphate-buffered saline, preserved with sodium azide.

Storage: When the vial is stored at 2-8°C, it should be stable for one year.

FOR IN VITRO LABORATORY USE ONLY.

WARRANTY: VMRD, Inc. warrants that this product is as described in the quantity and contents stated on the label at the time of delivery to the customer. NO OTHER WARRANTIES, EXPRESS OR IMPLIED, ARE MADE BEYOND THE LABEL DESCRIPTION, INCLUDING WARRANTIES OF MERCHANTABILITY OR FITNESS FOR A PARTICULAR USE. Remedy is limited to replacement of the product or refund of the purchase price. VMRD, Inc. is not liable for property damage, personal injury, or economic loss caused by the product. The information listed in this information sheet is provided for reference only, and should not be substituted for the user's own incoming material quality control.

References:

- Cobbold, S.P., and S. Metcalfe. Monoclonal antibodies that define canine homologues of human CD antigens: Summary of the First International Canine Leukocyte Antigen Workshop (CLAW). *Tissue Antigens* 43(3):137-154 (Mar. 1994).
- Kydd, J., *et al.* Report of the First International Workshop on Equine Leucocyte Antigens, Cambridge, UK, July 1991. *Vet. Immunol. Immunopathol.* 42(1):3-60 (July 1994).
- Kim, Y.B., *et al.* CD11/CD18 panel report for swine CD workshop. *Vet. Immunol. Immunopathol.* 43(1-3):289-291 (Oct. 1994).
- Saalmuller, A., *et al.* Summary of the animal homologue section of HLDA8. *Cell. Immunol.* 236(1-2):51-58 (Jul.-Aug. 2005).