



**VMRD**

PO Box 502, Pullman, WA 99163 USA

Telephone: + 1 (509) 334-5815

Fax: + 1 (509) 332-5356

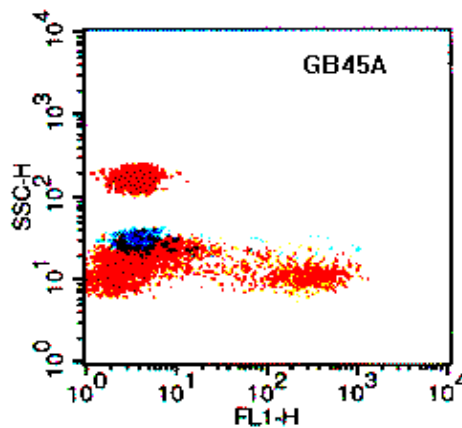
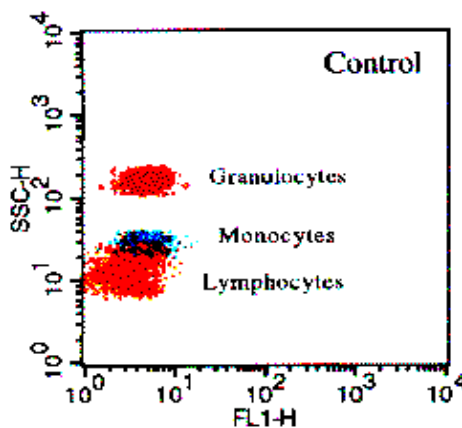
E-mail: [vmrd@vmrd.com](mailto:vmrd@vmrd.com)

Web site: <http://www.vmrd.com>

## Certificate of Analysis

### Monoclonal Antibody

**Cell Line:** GB45A  
**Specificity:** WC1-N26 Pan Leukocytes  
**Isotype:** IgG<sub>1</sub>  
**% Labeled PBMC:** 16  
**Species Reactivity:** Cattle, goat, sheep, swine, llama, alpaca, big horn sheep, white tail deer, mule deer, black tail deer, elk, bison. Does not react with camel.  
**Known Applications:** Flow cytometry, immunohistochemistry, cell function.



Profile obtained with bovine leukocytes.

#### References:

No reference at this time.

**Description and Handling:** This monoclonal antibody is produced as mouse ascites fluid, clarified by centrifugation, and filtered through a 0.2 µM filter. The concentration is 1.0 mg/ml in phosphate-buffered saline, preserved with sodium azide.

**Storage:** When the vial is stored at 2-8°C, it should be stable for one year.

*FOR IN VITRO LABORATORY USE ONLY.*

**WARRANTY:** VMRD, Inc. warrants that this product is as described in the quantity and contents stated on the label at the time of delivery to the customer. NO OTHER WARRANTIES, EXPRESS OR IMPLIED, ARE MADE BEYOND THE LABEL DESCRIPTION, INCLUDING WARRANTIES OF MERCHANTABILITY OR FITNESS FOR A PARTICULAR USE. Remedy is limited to replacement of the product or refund of the purchase price. VMRD, Inc. is not liable for property damage, personal injury, or economic loss caused by the product. The information listed in this information sheet is provided for reference only, and should not be substituted for the user's own incoming material quality control.