



VMRD

PO Box 502, Pullman, WA 99163 USA

Telephone: + 1 (509) 334-5815

Fax: + 1 (509) 332-5356

E-mail: vmrd@vmrd.com

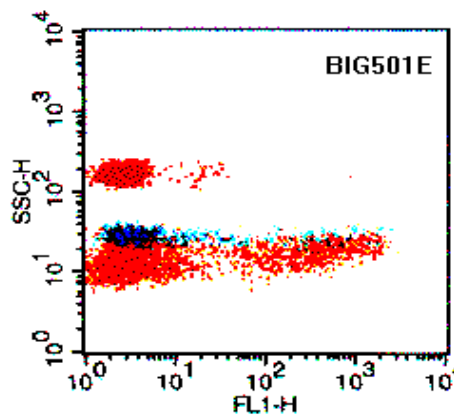
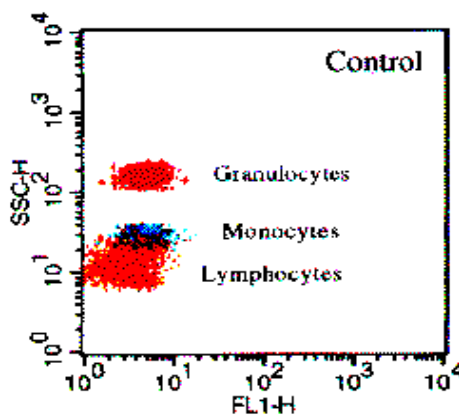
Web site: <http://www.vmrd.com>

Certificate of Analysis

Monoclonal Antibody

Cell Line: BIg501E
Specificity: Lambda light chain
Isotype: IgG₁
% Labeled PBMC: 25
Species Reactivity: Cattle, goat, sheep, water buffalo, big horn sheep, white tail deer, mule deer, black tail deer, elk (polymorphic in white tail deer). Does not react with swine, cat, dog, ferret, mink, llama, camel or bison.

Known Applications: Flow cytometry, immunohistochemistry, cell function assays.



Profile
obtained
with bovine
leukocytes.

References:

Harbo, S.J., *et al.* Characterization of lymphocyte populations by flow cytometry in a calf with sporadic juvenile lymphoma. *Vet. Clin. Pathol.* 33(3):163-167 (2004).

Davis, W.C., and R.A. Larsen. Genetic markers identified by immunogenetic methods. *Am. Fish. Soc. Symp.* 7:521-540 (1989).

Description and Handling: This monoclonal antibody is produced as mouse ascites fluid, clarified by centrifugation, and filtered through a 0.2 μ M filter. The concentration is 1.0 mg/ml in phosphate-buffered saline, preserved with sodium azide.

Storage: When the vial is stored at 2-8°C, it should be stable for one year.

FOR IN VITRO LABORATORY USE ONLY.

WARRANTY: VMRD, Inc. warrants that this product is as described in the quantity and contents stated on the label at the time of delivery to the customer. NO OTHER WARRANTIES, EXPRESS OR IMPLIED, ARE MADE BEYOND THE LABEL DESCRIPTION, INCLUDING WARRANTIES OF MERCHANTABILITY OR FITNESS FOR A PARTICULAR USE. Remedy is limited to replacement of the product or refund of the purchase price. VMRD, Inc. is not liable for property damage, personal injury, or economic loss caused by the product. The information listed in this information sheet is provided for reference only, and should not be substituted for the user's own incoming material quality control.