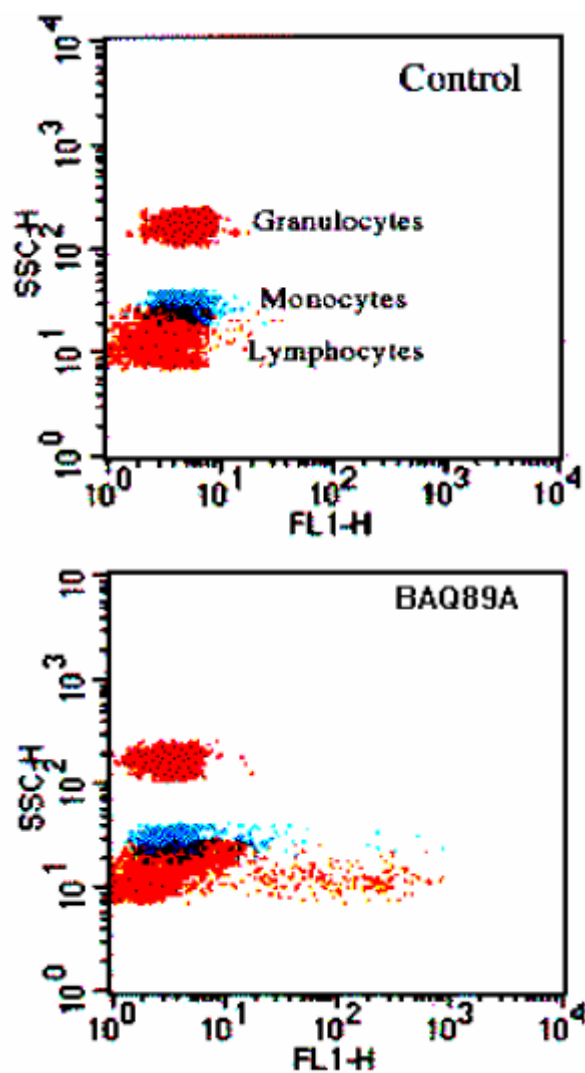


Monoclonal Antibody to WC1-N4 Pan Leukocyte Subpopulation

<u>Catalog No.:</u>	VBAQ89A-01	VBAQ89A-05
<u>Quantity:</u>	0.1 mg	0.5 mg
<u>Concentration:</u>	1.0 mg/ml	
<u>Host / Isotype:</u>	Mouse IgG1	
<u>Clone:</u>	BAQ89A	
<u>Format:</u>	State: Liquid ascites Purification: Clarified by centrifugation, and filtered through a 0.2 µM filter. Buffer System: Supplied in phosphate buffered saline, preserved with sodium azide.	
<u>Applications:</u>	Suitable for flow cytometry, immunohistochemistry and cell function. Other applications not tested. Optimal dilutions of this antibody are dependent on conditions and should be determined by the user.	
<u>Specificity:</u>	This antibody detects WC1-N4 Pan Leukocyte subpopulation. Labels 4 % PBMC. Species: Cattle, goat, sheep, water buffalo, Cape buffalo, big horn sheep, white tail deer, mule deer, black tail deer, elk or bison. Does not react with swine, horse, cat, dog, ferret, mink, llama or camel.	
<u>Storage:</u>	Store at 2 – 8 °C. Should this product contain a precipitate we recommend microcentrifugation before use. Shelf life: one year from despatch.	
<u>References:</u>	MacHugh, N.D., et al. Clustering of monoclonal antibodies recognizing different members of the WC1 gene family. <i>Vet. Immunol. Immunopathol.</i> 39(1-3):155-160 (Nov. 1993). Wijngaard, P.L.J., et al. Members of the novel WC1 gene family are differentially expressed on subsets of bovine CD4-CD8-gamma-delta T-lymphocytes. <i>J. Immunol.</i> 152(7):3476-3482 (Apr. 1994).	

Picture(s):



Profile obtained with bovine leukocytes.

VBAQ89A-01_-05/AV0207

For research and *in vitro* use only. Not for diagnostic or therapeutic work.
Material Safety Datasheets are available at www.acris-antibodies.com or on request.

Antibody Hotline • Technical Questions • Antibody Location Service
Free Call: 0800-2274746 (Germany only)
service@acris-antibodies.de

www.acris-antibodies.com