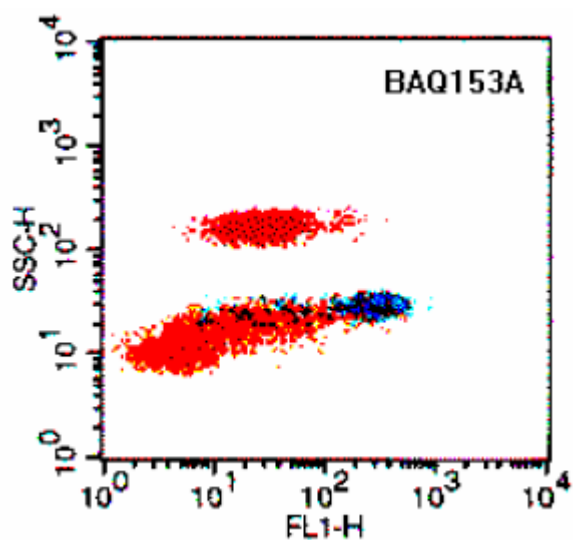
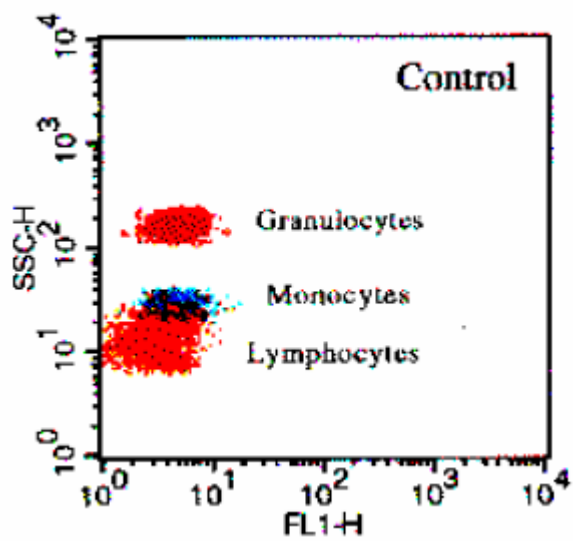


Monoclonal Antibody to CD11c

<u>Catalog No.:</u>	VBAQ153-01	VBAQ153-05
<u>Quantity:</u>	0.1 mg	0.5 mg
<u>Concentration:</u>	1.0 mg/ml	
<u>Background:</u>	CD11c expression is high on monocytes, macrophages and NK cells, moderate on granulocytes, and least on subsets of T and B cells. The level of expression on granulocytes can vary from low to high. Expression is low in sheep and rabbits, and moderate in cattle. The level of expression increases on B cells in B lymphocytotic cattle infected with bovine leukemia virus. It is also expressed on lymphoid cell lines including hairy cell leukemias in humans.	
<u>Host / Isotype:</u>	Mouse IgM	
<u>Clone:</u>	BAQ153A	
<u>Format:</u>	State: liquid Purification: Clarified by centrifugation, and filtered through a 0.2 µM filter. Buffer System: Supplied in phosphate buffered saline, preserved with sodium azide.	
<u>Applications:</u>	Suitable for Flow cytometry, immunohistochemistry and cell function assays. Other applications not tested. Optimal dilutions are dependent on conditions and should be determined by the user.	
<u>Specificity:</u>	Labels 54 % PBMC and 100 % granulocytes. Species: Reacts with Cattle, goat, sheep, water buffalo, Cape buffalo, big horn sheep, white tail deer, mule deer, black tail deer, elk, bison. Does not react with swine, horse, cat, dog, ferret, mink, llama or camel.	
<u>Storage:</u>	When the vial is stored at 2-8°C, it should be stable for one year.	
<u>References:</u>	Howard, C.J., et al. Summary of workshop findings for leukocyte antigens of cattle. Vet. Immunol. Immunopathol. 27(1-3):21-27 (Jan. 1991). Pighetti, G.M., and L.M. Sordillo. Specific immune responses of dairy cattle after primary inoculation with recombinant bovine interferon-gamma as an adjuvant when vaccinating against mastitis. Am. J. Vet. Res. 57(6):819-824 (June 1996). Sager, H., et al. Macrophage-parasite relationship in theileriosis. Reversible phenotypic and functional dedifferentiation of macrophages infected with Theileria annulata. J. Leukocyte Biol. 61(4):459-468 (Apr. 1997). Stone, D.M., et al. Modulation of bovine leukemia virus-associated spontaneous lymphocyte proliferation by monoclonal antibodies to lymphocyte surface molecules. Clin. Immunol. Immunopathol. 83(2):156-164 (May 1997). Herrmann, L.M., et al. CD21-positive follicular dendritic cells: A possible source of PrPSc in lymph node macrophages of scrapie-infected sheep. Am. J. Pathol. 162(4):1075-1081 (Apr. 2003). Harbo, S.J., et al. Characterization of lymphocyte populations by flow cytometry in a calf with sporadic juvenile lymphoma. Vet. Clin. Pathol. 33(3):163-167 (2004).	

Picture(s):



Profile obtained with bovine leukocytes.

VBAQ153-01_-05/AV0307

For research and *in vitro* use only. Not for diagnostic or therapeutic work.
Material Safety Datasheets are available at www.acris-antibodies.com or on request.

Antibody Hotline • Technical Questions • Antibody Location Service
Free Call: 0800-2274746 (Germany only)
service@acris-antibodies.de

www.acris-antibodies.com