

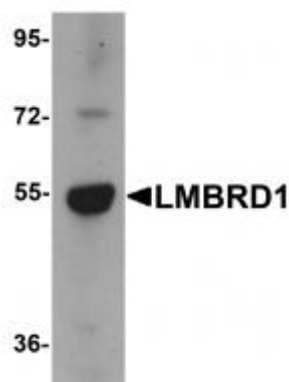
Polyclonal Antibody to LMBRD1 (C-term) - Aff - Purified

Alternate names:	C6orf209, HDAg-L-interacting protein NESI, LMBR1 domain-containing protein 1, NESI, Nuclear export signal-interacting protein, Probable lysosomal cobalamin transporter
Catalog No.:	TA319963
Quantity:	0.1 mg
Background:	LMBRD1, also known as NESI (nuclear export signal-interacting protein, is a lysosomal membrane protein that is thought be involved in the transport and metabolism of cobalamin. LMBRD1 was initially identified as interacting with the large form of the hepatitis delta antigen and may be required for the nucleocytoplasmic shuttling of the hepatitis delta virus. Mutations in this gene are associated with the vitamin B12 metabolism disorder termed, homocystinuria-megaloblastic anemia complementation type F (cb1F).
Uniprot ID:	Q9NUN5
NCBI:	NP_060838
GeneID:	55788
Host:	Rabbit
Immunogen:	18 amino acid peptide near the carboxy terminus of human LMBRD1
Format:	State: Liquid Ig fraction Purification: Affinity chromatography purified via peptide column Buffer System: PBS containing 0.02% sodium azide
Applications:	ELISA. Western blot: 1- 2 µg/ml. Positive control: Human Brain Tissue Lysate. Other applications not tested. Optimal dilutions are dependent on conditions and should be determined by the user.
Specificity:	This antibody detects LMBRD1 at C-term.
Species Reactivity:	Tested: Human, mouse, rat
Storage:	Store at 2 - 8 °C for up to three months or (in aliquots) at -20 °C for longer. Avoid repeated freezing and thawing. Shelf life: one year from despatch.
General Readings:	1. Gailus S, Höhne W, Gasnier B, Nürnberg P, Fowler B, Rutsch F. Insights into lysosomal cobalamin trafficking: lessons learned from cb1F disease. J Mol Med (Berl). 2010 May;88(5):459-66. doi: 10.1007/s00109-010-0601-x. Epub 2010 Feb 20. PubMed PMID: 20174775. 2. Wang YH, Chang SC, Huang C, Li YP, Lee CH, Chang MF. Novel nuclear export signal-interacting protein, NESI, critical for the assembly of hepatitis delta virus. J Virol. 2005

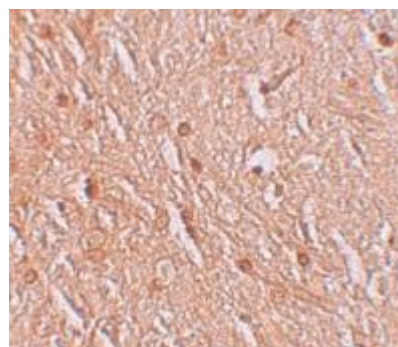
Jul;79(13):8113-20. PubMed PMID: 15956556.

Pictures:

Western blot analysis of LMBRD1 in human brain tissue lysate with LMBRD1 antibody at 1 ug/mL.



Immunohistochemistry of LMBRD1 in human brain tissue with LMBRD1 antibody at 2.5 ug/mL.



Immunofluorescence of LMBRD1 in human brain tissue with LMBRD1 antibody at 20 ug/mL.

