

Polyclonal Antibody to WIPI-1 (C-term) - Aff - Purified

Alternate names:	Atg18 protein homolog, WD repeat domain phosphoinositide-interacting protein 1, WD40 repeat protein interacting with phosphoinositides of 49 kDa, WIPI1, WIPI49
Catalog No.:	TA319950
Quantity:	0.1 mg
Concentration:	1.0 mg/ml
Background:	WIPI1 (WD repeat domain, phosphoinositide interacting-1), also known as WIPI1, ATG18 or WIPI49, is thought to play a role in autophagy and may regulate protein trafficking in certain recycling pathways. It contains three WD repeats and has a 7-bladed propeller structure with a conserved motif that facilitates its interaction with other proteins. WIPI1 localizes to cytoplasmic vesicles, endosomes, clathrin-coated vesicles and the trans-Golgi network. It is ubiquitously expressed with highest expression in heart, testis, placenta, pancreas and skeletal muscle. WIPI1 is upregulated in a variety of tumors, suggesting a role in carcinogenesis.
Uniprot ID:	Q5MNZ9
NCBI:	NP_060453
GeneID:	55062
Host / Isotype:	Rabbit / IgG
Immunogen:	17 amino acid synthetic peptide near the carboxy terminus of Human WIPI1 (AP55473CP-N)
Format:	State: Liquid purified Ig fraction Purification: Affinity chromatography purified via peptide column Buffer System: PBS containing 0.02% Sodium Azide as preservative
Applications:	Western blot: 1-2 µg/ml. <i>Positive Control:</i> Rat colon tissue lysate. Immunofluorescence: Start at 20 µg/ml. Other applications not tested. Optimal dilutions are dependent on conditions and should be determined by the user.
Molecular Weight:	49 kDa
Specificity:	At least two isoforms of WIPI1 are known to exist, this antibody will detect both isoforms.
Species Reactivity:	Tested: Human, Mouse, Rat.
Add. Information:	Blocking peptide available: AP55473CP-N
Storage:	Store undiluted at 2-8°C for one month or (in aliquots) at -20°C for longer. Avoid repeated freezing and thawing. Shelf life: one year from despatch.
General Readings:	1. Proikas-Cezanne T, Robenek H. Freeze-fracture replica immunolabelling reveals human WIPI-1 and WIPI-2 as membrane proteins of autophagosomes. J Cell Mol Med. 2011

Sep;15(9):2007-10. doi: 10.1111/j.1582-4934.2011.01339.x. PubMed PMID: 21564513.

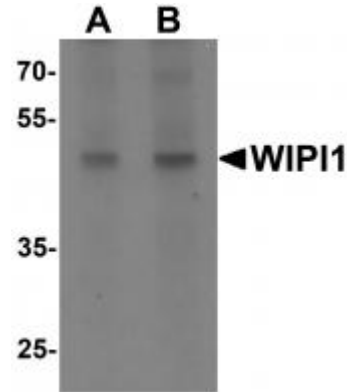
2. Jeffries TR, Dove SK, Michell RH, Parker PJ. PtdIns-specific MPR pathway association of a novel WD40 repeat protein, WIPI49. *Mol Biol Cell*. 2004 Jun;15(6):2652-63. Epub 2004 Mar 12. PubMed PMID: 15020712.

3. Proikas-Cezanne T, Waddell S, Gaugel A, Frickey T, Lupas A, Nordheim A. WIPI-1alpha (WIPI49), a member of the novel 7-bladed WIPI protein family, is aberrantly expressed in human cancer and is linked to starvation-induced autophagy. *Oncogene*. 2004 Dec 16;23(58):9314-25. PubMed PMID: 15602573.

4. Proikas-Cezanne T, Ruckerbauer S, Stierhof YD, Berg C, Nordheim A. Human WIPI-1 puncta-formation: a novel assay to assess mammalian autophagy. *FEBS Lett*. 2007 Jul 24;581(18):3396-404. Epub 2007 Jun 27. PubMed PMID: 17618624.

Pictures:

Western blot analysis of WIPI1 in rat colon tissue lysate with WIPI1 antibody at (A) 1 and (B) 2 ug/mL.



Immunofluorescence of WIPI1 in human colon tissue with WIPI1 antibody at 20 ug/mL.

