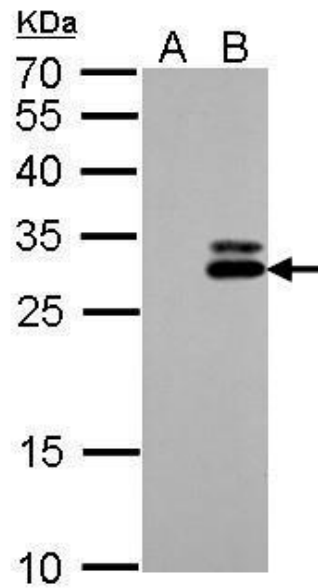


## Polyclonal Antibody to KLK7 / Kallikrein-7 (1-237) - Aff - Purified

<b>Alternate names:</b>	PRSS6, SCCE, Serine protease 6, Stratum corneum chymotryptic enzyme, hK7
<b>Catalog No.:</b>	TA308502
<b>Quantity:</b>	0.1 ml
<b>Concentration:</b>	0.7 mg/ml
<b>Background:</b>	Kallikreins are a subgroup of serine proteases having diverse physiological functions. Growing evidence suggests that many kallikreins are implicated in carcinogenesis and some have potential as novel cancer and other disease biomarkers. This gene is one of the fifteen kallikrein subfamily members located in a cluster on chromosome 19. Its encoded enzyme is thought to be involved in the proteolysis of intercellular cohesive structures preceding desquamation, which is the shedding of the outermost layer of the epidermis. Alternative splicing of this gene results in two transcript variants encoding the same protein.
<b>Uniprot ID:</b>	<a href="#">P49862</a>
<b>NCBI:</b>	<a href="#">9606</a>
<b>GeneID:</b>	<a href="#">5650</a>
<b>Host:</b>	Rabbit
<b>Immunogen:</b>	Recombinant protein fragment contain a sequence corresponding to a region within amino acids 1 and 237 of Human KLK7
<b>Format:</b>	<b>State:</b> Liquid purified IgG fraction. <b>Purification:</b> Antigen-Affinity Chromatography. <b>Buffer System:</b> 0.1M Tris, 0.1M Glycine, 10% Glycerol (pH7) <b>Preservatives:</b> 0.01% Thimerosal
<b>Applications:</b>	<b>Western blotting:</b> 1/500-1/3000. <i>Positive Controls:</i> 293T <b>Immunohistochemistry on Formalin-Fixed Paraffin-Embedded Sections.</b> Other applications not tested. Optimal dilutions are dependent on conditions and should be determined by the user.
<b>Specificity:</b>	Recognizes Kallikrein-7/KLK7. Cellular Localization: Secreted.
<b>Species Reactivity:</b>	<b>Tested:</b> Human.
<b>Add. Information:</b>	<b>Predicted Target Size:</b> 28 kDa
<b>Storage:</b>	Store the antibody undiluted at (in aliquots) at -20°C. Avoid repeated freezing and thawing. Shelf life: one year from despatch.

**Pictures:**

KLK7 antibody detects KLK7 protein by Western blot analysis. A. 30 ug 293T whole cell lysate/extract. B. 30 ug whole cell lysate/extract of human KLK7-transfected 293T cells. 12 % SDS-PAGE. KLK7 antibody (TA308502) dilution: 1:5000



Immunohistochemical analysis of paraffin-embedded Cal27 xenograft, using KLK7(TA308502) antibody at 1:100 dilution.

