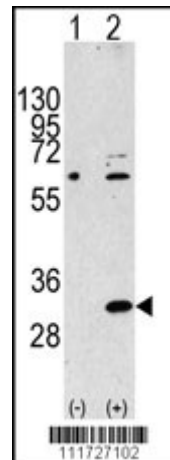


Polyclonal Antibody to EIF4E2 / EIF4EL3 (N-term) - Purified

Alternate names:	Eukaryotic translation initiation factor 4E homologous protein, Eukaryotic translation initiation factor 4E type 2, Eukaryotic translation initiation factor 4E-like 3, eIF-4E type 2, eIF4E type 2, eIF4E-like protein 4E-LP, mRNA cap-binding protein 4EHP, mRNA cap-binding protein type 3
Catalog No.:	TA302039
Quantity:	0.4 ml
Concentration:	lot specific
Background:	EIF4E2 is expressed exclusively in the cytoplasm. This protein recognizes and binds the 7 methylguanosine containing mRNA cap during an early step in the initiation of protein synthesis and facilitates ribosome binding by inducing the unwinding of the mRNAs secondary structures.
Uniprot ID:	O60573
NCBI:	9606
GeneID:	9470
Host / Isotype:	Rabbit / Ig
Immunogen:	This antibody is generated from rabbits immunized with a KLH conjugated synthetic peptide selected from the N-terminal region of human EIF4E2.
Format:	State: Liquid Ig fraction Purification: Protein A column, eluted with high and low pH buffers and neutralized immediately, followed by dialysis against PBS Buffer System: PBS with 0.09% (W/V) sodium azide
Applications:	ELISA 1:1,000. Western blot 1:100 - 1:500. Immunohistochemistry 1:50 - 1:100. Other applications not tested. Optimal dilutions are dependent on conditions and should be determined by the user.
Specificity:	This antibody detects EIF4E2 at N-term. Species: Human. Other species not tested.
Add. Information:	Molecular weight: 28362 Da
Storage:	Store the antibody at 2 - 8 °C up to one month or (in aliquots) at -20 °C for longer. Avoid repeated freezing and thawing. Shelf life: one year from despatch.

- General Readings:**
1. Rom, E., et al., J. Biol. Chem. 273(21):13104-13109 (1998).
 2. Mao, M., et al., Proc. Natl. Acad. Sci. U.S.A. 95(14):8175-8180 (1998).
 3. Tee, A.R., et al., FEBS Lett. 564 (1-2), 58-62 (2004) (): 0.

Pictures: Western blot analysis of EIF4E2 Antibody (N-term) polyclonal antibody (Cat.#TA302039) (arrow). 293 cell lysates (2 ug/lane) either nontransfected (Lane 1) or transiently transfected with the EIF4E2 gene (Lane 2) (Origene Technologies).



Formalin-fixed and paraffin-embedded human breast carcinoma reacted with EIF4E2 Antibody (N-term) (Cat.#TA302039), which was peroxidase-conjugated to the secondary antibody, followed by DAB staining. This data demonstrates the use of this antibody for immunohistochemistry; clinical relevance has not been evaluated.

