

## Smac / Diablo (225-239) control peptide

**Catalog No.:** SP6277CP

**Quantity:** 50 µg

**Concentration:** 1.0 mg/ml

**Background:** CD8 T cell surface antigen is heterodimer of an alpha and a beta chain linked by two disulfide bonds. It belongs type I membrane protein. Selectively expressing of CD8 on a subset of T cells leads to CD8 T cell development. Through identifying cytotoxic/suppressor T-cells that interact with MHC class I bearing targets, CD8 is thought to play a role in the process of T-cell mediated killing. Veillette et al (1988) found the CD8 is associated with the internal membrane tyrosine-protein kinase p56lck.

**Immunogen:** Mouse spleen cells.  
Spleen cells from an immunised DA rat were fused with cells of the rat Y3/Ag1.2.3. myeloma cell line.

**Format:** **State:** Liquid purified IgG fraction.  
**Purification:** Affinity Chromatography on Protein G.  
**Buffer System:** PBS, pH 7.4 containing 0.09% Sodium Azide as preservative.

**Applications:** Flow Cytometry: Use 10 µl of 1/50-1/100 diluted antibody to label 10e6 cells in 100 µl. Immunohistochemistry on Frozen Sections.  
Other applications not tested. Optimal dilutions are dependent on conditions and should be determined by the user.

**Specificity:** This antibody recognises a non polymorphic epitope on the CD8 alpha chain. Blocks MHC I dependent T cell responses in vitro and in vivo, and induces transplantation tolerance in combination with CD4 antibodies.  
**Species:** Mouse.  
Others not tested.

**Storage:** Store the antibody undiluted at 2-8°C for one month or (in aliquots) at -20°C for longer. Avoid repeated freezing and thawing.  
Shelf life: one year from despatch.

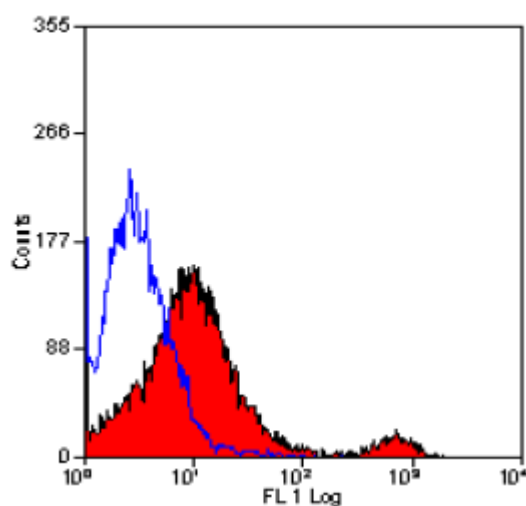
**General References:** 1. Qin, S. et al. (1990) Induction of tolerance in peripheral T cells with monoclonal antibodies. Eur. J. Immunol. 20: 2737-2745.  
2. Cobbold, S.P. et al. (1990) The induction of skin graft tolerance in MHC-mis matched or primed recipients: primed T-cells can be tolerized in the periphery with CD4 and CD8 antibodies. Eur. J. Immunol. 20: 2747-2755.  
3. Wise, M.P. et al. (1998) Cutting edge: Linked suppression of skin graft rejection can operate through indirect recognition. J. Immunol. 161: 5813-5816.

**For research and in vitro use only. Not for diagnostic or therapeutic work.**

Material Safety Datasheets are available at [www.acris-antibodies.com](http://www.acris-antibodies.com) or on request.

Antibody Hotline - Technical Questions - Antibody Location Service  
Free Call: 0800-2274746 (Germany only) - [www.acris-antibodies.com](http://www.acris-antibodies.com)

## Pictures:



Staining of mouse spleen cells with  
RAT ANTI MOUSE CD8

**For research and in vitro use only. Not for diagnostic or therapeutic work.**

Material Safety Datasheets are available at [www.acris-antibodies.com](http://www.acris-antibodies.com) or on request.

Antibody Hotline - Technical Questions - Antibody Location Service  
Free Call: 0800-2274746 (Germany only) - [www.acris-antibodies.com](http://www.acris-antibodies.com)