

DcR3 control peptide

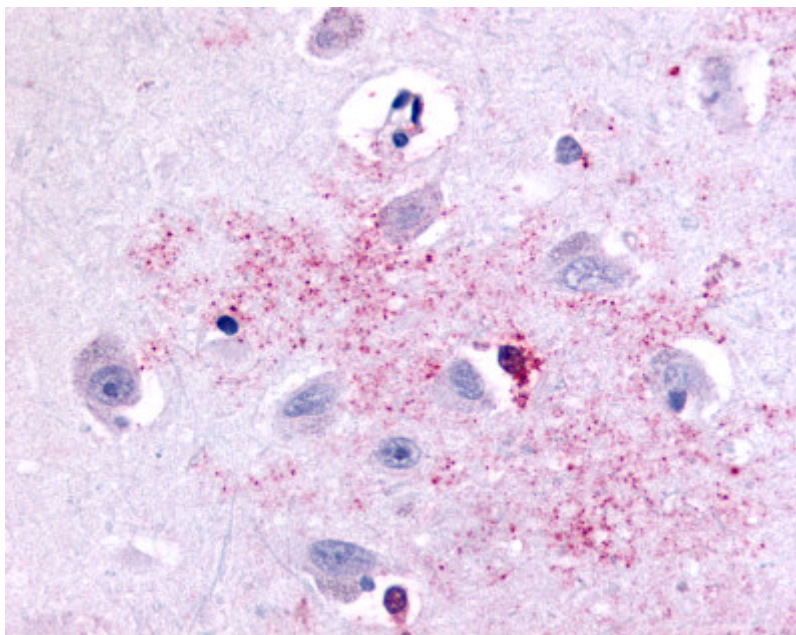
Catalog No.:	SP6259CP
Quantity:	50 µg
Concentration:	1.0 mg/ml
Background:	<p>PAK6, a PAK (STE20) type protein kinase, contains a N-terminal Cdc42/Rac interactive binding (CRIB) motif and a C-terminal kinase domain. The protein has been shown to bind to GTP-Cdc42 and GTP-Rac; however, in contrast to most PAKs, kinase activity was not stimulated by Cdc42 or Rac, but could be stimulated by androgen receptor (AR) binding. PAK6 protein also has been shown to bind to estrogen receptor alpha. PAK6 also has been called P21-Activated Kinase 5 (PAK5); however, PAK5 is a distinct gene found on chromosome 20 p12.2.</p> <p>PAK6 expression has been documented in normal human brain, breast, prostate and testis. ESTs have been isolated from several tissue libraries, including normal brain and testis and cancerous cervix and smooth muscle.</p>
Immunogen:	<p>Synthetic peptide - KLH conjugated</p> <p>Epitope: Linker domain of human</p> <p>Genename: PAK6</p>
Format:	<p>State: Liquid Ig fraction</p> <p>Purification: Peptide immunogen affinity column</p> <p>Buffer System: PBS, pH 7.7, containing 0.01% sodium azide</p>
Applications:	<p>Immunohistochemistry on paraffin embedded sections: 4,8-11 µg/ml</p> <p>Antigen retrieval:</p> <p>Steam slides in 0.01 M sodium citrate buffer, pH 6.0, at 99-100°C for 20 min. Remove from heat and let stand at room temperature in buffer for 20 min. Rinse in 1x TBS with Tween (TBST) for 1 min. at room temperature.</p> <p>Other applications not tested. Optimal dilutions are dependent on conditions and should be determined by the user.</p>
Specificity:	<p>Reacts with P21-Activated Kinase 6 (PAK6) (family: Protein Kinase, subfamily: PAK (STE20))</p> <p>Species: Human.</p> <p>Others not tested.</p>
Add. Information:	This product was originally produced by MBL International.
Storage:	<p>Store the antibody undiluted at 2-8°C for one month or (in aliquots) at -70°C for longer.</p> <p>Avoid repeated freezing and thawing.</p> <p>Shelf life: one year from despatch.</p>

For research and in vitro use only. Not for diagnostic or therapeutic work.

Material Safety Datasheets are available at www.acris-antibodies.com or on request.

Antibody Hotline - Technical Questions - Antibody Location Service
Free Call: 0800-2274746 (Germany only) - www.acris-antibodies.com

Pictures:



Immunohistochemical staining of Brain (Neurons and Glia) using anti- PAK6 antibody SP4704P

For research and in vitro use only. Not for diagnostic or therapeutic work.

Material Safety Datasheets are available at www.acris-antibodies.com or on request.

Antibody Hotline - Technical Questions - Antibody Location Service
Free Call: 0800-2274746 (Germany only) - www.acris-antibodies.com