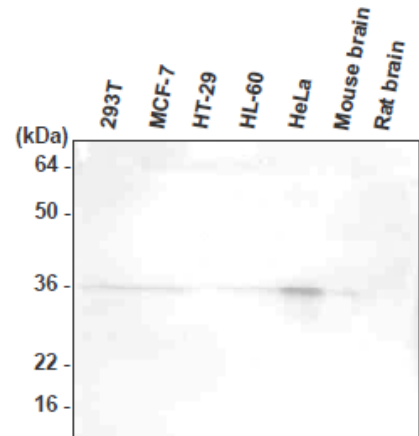


**SM6012****Monoclonal Antibody to HTRA2 / PRSS25 - Purified**

|                                      |   |
|--------------------------------------|---|
| <b>Alternate names:</b>              | High temperature requirement protein A2, OMI, Omi stress-regulated endoprotease, Serine protease 25, Serine proteinase OMI, mitochondrial Serine protease HTRA2   |
| <b>Quantity:</b>                     | 0.1 ml  |
| <b>Concentration:</b>                | 1.0 mg/ml   |
| <b>Background:</b>                   | HtrA2/Omi is a mammalian serine protease at high temperatures and a chaperone at low temperature. The full-length HtrA2 is synthesized as a precursor protein and then targeted to the mitochondria where it is matured by the removal of N-terminal 133 residues. Recently, HtrA2 has been known to contribute both to caspase-dependent and caspase-independent cell death. |
| <b>Uniprot ID:</b>                   | <a href="#">O43464</a>  |
| <b>NCBI:</b>                         | <a href="#">NP_037379.1</a>   |
| <b>GeneID:</b>                       | <a href="#">27429</a>   |
| <b>Host / Isotype:</b>               | Mouse / IgG1  |
| <b>Recommended Isotype Controls:</b> | SM10P (for use in human samples), AM03095PU-N   |
| <b>Clone:</b>                        | 1B3   |
| <b>Immunogen:</b>                    | Recombinant human HtrA2/Omi (134-458 aa) purified from E. coli  |
| <b>Format:</b>                       | <b>State:</b> Liquid purified Ig fraction<br><b>Purification:</b> Protein-G affinity chromatography<br><b>Buffer System:</b> PBS, pH 7.4 containing 0.02% Sodium Azide and 10% Glycerol   |
| <b>Applications:</b>                 | ELISA.<br>Western blot (1:500 - 1:2,000).<br>Other applications not tested. Optimal dilutions are dependent on conditions and should be determined by the user.   |
| <b>Specificity:</b>                  | The antibody recognizes human and mouse HtrA2/Omi. Does not react with rat.<br>Other species not tested.<br><b>Species:</b> Human, mouse<br>Other species not tested.   |
| <b>Storage:</b>                      | Store undiluted at 2-8°C for up to two weeks or (in aliquots) at -20°C for longer.<br>Avoid repeated freezing and thawing.<br>Shelf life: one year from despatch.   |
| <b>General Readings:</b>             | Gui-Ying N., et al., (2003) Biochem. J. 371, 39-48.   |

**Pictures:**

**Western blot analysis:** The extracts of 293T, MCF7, HT-29, HL-60, HeLa, mouse brain, and rat brain were resolved by SDS-PAGE, transferred to PVDF membrane and probed with anti-human HtrA2/Omi antibody (1:1,000). Proteins were visualized using a goat anti-mouse secondary antibody conjugated to HRP and an ECL detection system.



The extracts of 293T, MCF7, HT-29, HL-60, HeLa, mouse brain, and rat brain were resolved by SDS-PAGE, transferred to PVDF membrane and probed with anti-human HtrA2/Omi antibody (1:1,000). Proteins were visualized using a goat anti-mouse secondary antibody conjugated to HRP and an ECL detection system.

