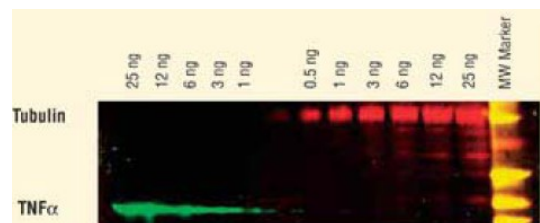
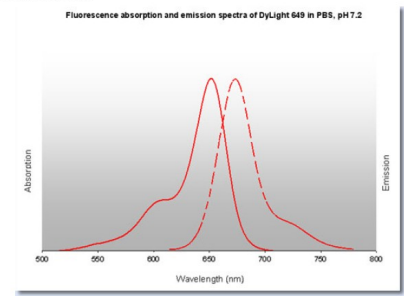


## Streptococcus Protein G (DyLight649 conjugated) - DyLight649







<b>Catalog No.:</b>	RA101DL7
<b>Quantity:</b>	0.1 mg
<b>Concentration:</b>	1.0 mg/ml (by UV absorbance at 280 nm)
<b>Species:</b>	Streptococcus
<b>Format:</b>	<b>State:</b> Lyophilized <b>Purity:</b> >95% <b>Buffer System:</b> 0.02 M Potassium Phosphate, 0.15 M Sodium Chloride, pH 7.2 containing 10 mg/ml Bovine Serum Albumin (BSA) and 0.01% (w/v) Sodium Azide <b>Label:</b> DyLight(TM) 649 (MW 1,008.02) <b>Protein Ratio:</b> 3,2 moles DyLight(TM) 649 per mole of Protein G <b>Absorption/Emission:</b> 646 nm / 674 nm <b>Reconstitution:</b> Restore with 0.1 ml of deionized water (or equivalent).
<b>Applications:</b>	Western Blot: >1/20,000. ELISA: >1/10,000. Immunofluorescence: >1/5,000. Other applications not tested. Optimal dilutions are dependent on conditions and should be determined by the user.
<b>Description:</b>	Single precipitin arc against anti-biotin and anti-Protein G.
<b>Storage:</b>	Prior to reconstitution store at 2-8°C. Following reconstitution store the protein undiluted at 2-8°C for one month or (in aliquots) at -20°C for longer. Avoid repeated freezing and thawing. Shelf life: one year from despatch.
<b>Pictures:</b>	DyLight(TM) dyes can be used for two-color Western Blot detection with low background and high signal. Anti-tubulin was detected using a DyLight(TM)549 conjugate. Anti-TNFalpha was detected using a DyLight(TM)649 conjugate. The image was captured using the Typhoon(TM)9410 Imaging System.



DyLight™ 649 Fluorescence Spectra:



Properties of DyLight™ Fluorescent Dyes:

Emission	Color	DyLight™ Dye	Ex/Em (nm)	$\epsilon$ ( $M^{-1}cm^{-1}$ )	Similar Dyes
Blue		405	400/420	30,000	Alexa™ 405, Cascade Blue
Green		488	493/518	70,000	Alexa™ 488, Cy2®, FITC
Yellow		549	550/568	150,000	Alexa™ 546, Alexa 555, Cy3®, TRITC
Red		649	645/674	250,000	Alexa™ 647, Cy5®
Near Infrared		680	682/715	140,000	Alexa™ 680, Cy5.5®, IRDye™ 700
Infrared		800	770/794	270,000	IRDye™ 800