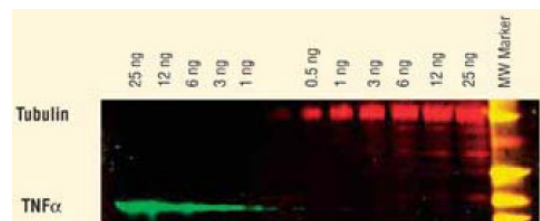
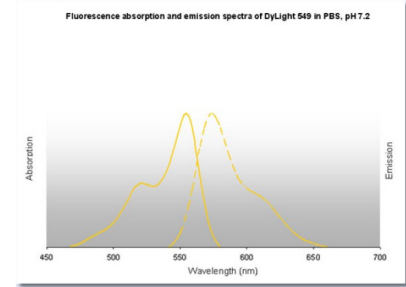


Streptococcus Protein G (DyLight549 conjugated) - DyLight549







| | |
|-----------------------|---|
| Catalog No.: | RA101DL6 |
| Quantity: | 0.1 mg |
| Concentration: | 1.0 mg/ml (by UV absorbance at 280 nm) |
| Species: | Streptococcus |
| Format: | State: Lyophilized Purity: >95% Buffer System: 0.02 M Potassium Phosphate, 0.15 M Sodium Chloride, pH 7.2 containing 10 mg/ml Bovine Serum Albumin (BSA) and 0.01% (w/v) Sodium Azide Label: DyLight(TM) 549 (MW 981.85) Protein Ratio: 3,1 moles DyLight(TM) 549 per mole of Protein G Absorption/Emission: 550 nm / 568 nm Reconstitution: Restore with 0.1 ml of deionized water (or equivalent). |
| Applications: | Western Blot: >1/20,000. ELISA: >1/10,000. Immunofluorescence: >1/5,000. Other applications not tested. Optimal dilutions are dependent on conditions and should be determined by the user. |
| Description: | Single precipitin arc against anti-biotin and anti-Protein G. |
| Storage: | Prior to reconstitution store at 2-8°C. Following reconstitution store the protein undiluted at 2-8°C for one month or (in aliquots) at -20°C for longer. Avoid repeated freezing and thawing. Shelf life: one year from despatch. |
| Pictures: | DyLight(TM) dyes can be used for two-color Western Blot detection with low background and high signal. Anti-tubulin was detected using a DyLight(TM)549 conjugate. Anti-TNFalpha was detected using a DyLight(TM) 649 conjugate. The image was captured using the Typhoon(TM)9410 Imaging System. |



DyLight™ 549 Fluorescence Spectra:



Properties of DyLight™ Fluorescent Dyes:

| Emission | Color | DyLight™ Dye | Ex/Em (nm) | ϵ (M ⁻¹ cm ⁻¹) | Similar Dyes |
|---------------|--|--------------|------------|--|------------------------------------|
| Blue |  | 405 | 400/420 | 30,000 | Alexa™ 405, Cascade Blue |
| Green |  | 488 | 493/518 | 70,000 | Alexa™ 488, Cy2®, FITC |
| Yellow |  | 549 | 550/568 | 150,000 | Alexa™ 546, Alexa 555, Cy3®, TRITC |
| Red |  | 649 | 646/674 | 250,000 | Alexa™ 647, Cy5® |
| Near Infrared |  | 680 | 682/715 | 140,000 | Alexa™ 680, Cy5.5®, IRDye™ 700 |
| Infrared |  | 800 | 770/794 | 270,000 | IRDye™ 800 |