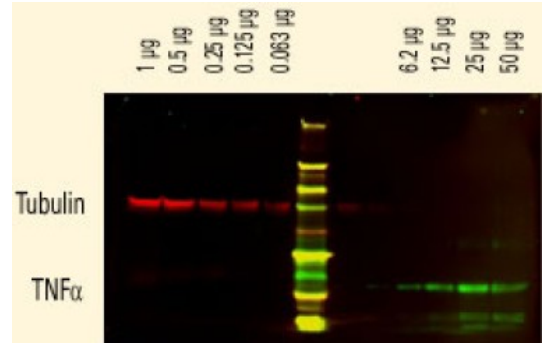


S. aureus Protein A (DyLight680 conjugated) - DyLight680

Catalog No.:	RA100DL8
Quantity:	0.1 mg
Concentration:	1.0 mg/ml (by UV absorbance at 280 nm)
Background:	Protein A is a surface protein of S.aureus which binds IgG molecules by their Fc region. In serum, the bacteria will bind IgG molecules in the wrong orientation on their surface which hinders opsonization and phagocytosis. Mutants of S. aureus lacking protein A are more efficiently phagocytosed in vitro, and mutants in infection models have diminished virulence. Due to its affinity for the Fc region of many mammalian immunoglobulins, protein A is considered a universal reagent in biochemistry and immunology.
Species:	S. aureus
Format:	State: Lyophilized Purity: >95% Buffer System: 0.02 M Potassium Phosphate, 0.15 M Sodium Chloride, pH 7.2 containing 10 mg/ml BSA and 0.01% (w/v) Sodium Azide Label: DyLight(TM) 680 (MW 950) Fluorochrome/Protein Ratio: 2,8 moles DyLight(TM) 680 per mole of Protein A Absorption/Emission: 682 nm / 715 nm Reconstitution: Restore with 0.1 ml of deionized water (or equivalent).
Applications:	Western Blot: >1/20,000. ELISA: >1/10,000. Immunofluorescence: >1/5,000. Other applications not tested. Optimal dilutions are dependent on conditions and should be determined by the user.
Description:	Single precipitin arc against anti-Protein A.
Storage:	Prior to reconstitution store at 2-8°C. Following reconstitution store the protein undiluted at 2-8°C for one month or (in aliquots) at -20°C for longer. Avoid repeated freezing and thawing. Shelf life: one year from despatch.

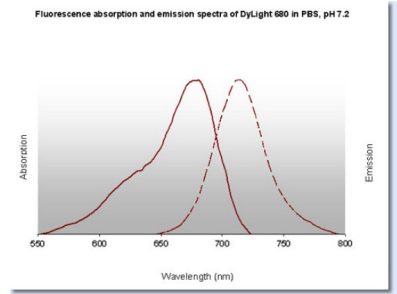
Pictures:

DyLight(TM) dyes can be used for two-color Western Blot detection with low background and high signal. Anti-tubulin was detected using a DyLight(TM)680 conjugate. Anti-TNFalpha was detected using a DyLight(TM)800 conjugate. The image was captured using the Odyssey(R) Infrared Imaging System developed by LI-COR.









DyLight™ 680 Fluorescence Spectra:

Fluorescence absorption and emission spectra of DyLight 680 in PBS, pH 7.2



Properties of DyLight™ Fluorescent Dyes:

Emission	Color	DyLight™ Dye	Ex/Em (nm)	ϵ (M ⁻¹ cm ⁻¹)	Similar Dyes
Blue		405	400/420	30,000	Alexa™ 405, Cascade Blue
Green		488	493/518	70,000	Alexa™ 488, Cy2®, FITC
Yellow		549	550/568	150,000	Alexa™ 546, Alexa 555, Cy3®, TRITC
Red		649	646/674	250,000	Alexa™ 647, Cy5®
Near Infrared		680	682/715	140,000	Alexa™ 680, Cy5.5®, IRDye™ 700
Infrared		800	770/794	270,000	IRDye™ 800