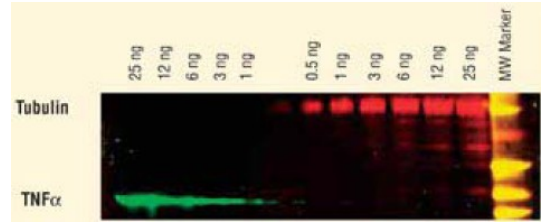


S. aureus Protein A (DyLight649 conjugated) - DyLight649

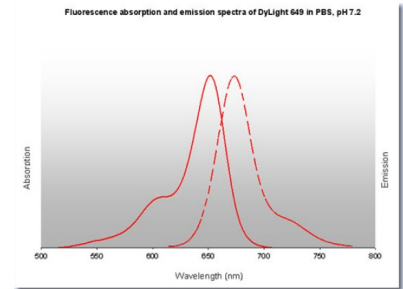
| | |
|-----------------------|---|
| Catalog No.: | RA100DL7 |
| Quantity: | 0.1 mg |
| Concentration: | 1.0 mg/ml (by UV absorbance at 280 nm) |
| Background: | Protein A is a surface protein of S.aureus which binds IgG molecules by their Fc region. In serum, the bacteria will bind IgG molecules in the wrong orientation on their surface which hinders opsonization and phagocytosis. Mutants of S. aureus lacking protein A are more efficiently phagocytosed in vitro, and mutants in infection models have diminished virulence. Due to its affinity for the Fc region of many mammalian immunoglobulins, protein A is considered a universal reagent in biochemistry and immunology. |
| Species: | S. aureus |
| Format: | State: Lyophilized Purity: >95% Buffer System: 0.02 M Potassium Phosphate, 0.15 M Sodium Chloride, pH 7.2 containing 10 mg/ml BSA and 0.01% (w/v) Sodium Azide Label: DyLight(TM) 649 (MW 1,008.02) Fluorochrome/Protein Ratio: 3,2 moles DyLight(TM) 649 per mole of Protein A Absorption/Emission: 646 nm / 674 nm Reconstitution: Restore with 0.1 ml of deionized water (or equivalent). |
| Applications: | Western Blot: >1/20,000. ELISA: >1/10,000. Immunofluorescence: >1/5,000. Other applications not tested. Optimal dilutions are dependent on conditions and should be determined by the user. |
| Description: | Single precipitin arc against anti-Protein A. |
| Storage: | Prior to reconstitution store at 2-8°C. Following reconstitution store the protein undiluted at 2-8°C for one month or (in aliquots) at -20°C for longer. Avoid repeated freezing and thawing. Shelf life: one year from despatch. |

Pictures:







DyLight(TM) dyes can be used for two-color Western Blot detection with low background and high signal. Anti-tubulin was detected using a DyLight(TM)549 conjugate. Anti-TNFalpha was detected using a DyLight(TM)649 conjugate. The image was captured using the Typhoon(TM)9410 Imaging System.



DyLight™ 649 Fluorescence Spectra:



Properties of DyLight™ Fluorescent Dyes:

| Emission | Color | DyLight™ Dye | Ex/Em (nm) | ϵ (M ⁻¹ cm ⁻¹) | Similar Dyes |
|---------------|---|--------------|------------|--|------------------------------------|
| Blue |  | 405 | 400/420 | 30,000 | Alexa™ 405, Cascade Blue |
| Green |  | 488 | 493/518 | 70,000 | Alexa™ 488, Cy2®, FITC |
| Yellow |  | 549 | 550/568 | 150,000 | Alexa™ 546, Alexa 555, Cy3®, TRITC |
| Red |  | 649 | 646/674 | 250,000 | Alexa™ 647, Cy5® |
| Near Infrared |  | 680 | 682/715 | 140,000 | Alexa™ 680, Cy5.5®, iRDye™ 700 |
| Infrared |  | 800 | 770/794 | 270,000 | iRDye™ 800 |