

PP1115P1**Polyclonal Antibody to Interleukin-10 / IL10 - Aff - Purified****Alternate names:**

CSIF, Cytokine synthesis inhibitory factor, IL-10, TGIF

Quantity:

50 µg

Background:

Interleukins (ILs) are a large group of cytokines that are produced mainly by leukocytes, although some are produced by certain phagocytes and auxiliary cells. ILs have a variety of functions, but most function to direct other immune cells to divide and differentiate. Each IL acts on a specific, limited group of cells through a receptor specific for that IL. Human IL10 is a non glycosylated polypeptide consisting of 178 amino acids. There is 73% homology between the human and mouse IL10 proteins, however, the human IL10 acts on both human and mouse target cells, while the mouse IL10 has species specific activity. The cellular sources of IL10 are CD4+ T cells and T cell clones, thymocytes, B cells and B cell lymphomas, macrophages, mast cell lines and keratinocytes. IL10 will stimulate the growth of stem cells, mast cells and thymocytes. IL10 enhances cytotoxic T cell development, and costimulates B cell differentiation and immunoglobulin secretion. IL10 inhibits cytokine production by macrophages and suppresses macrophage class II MHC expression. The human IL10 gene is on human chromosome 1.

Uniprot ID:[P29456](#)**NCBI:**[NP_036986](#)**GeneID:**[25325](#)**Host:**

Rabbit

Immunogen:Highly pure (>98%) E.coli derived recombinant Rat IL-10 (*Cat.-No* PA041).**Format:****State:** Lyophilized (sterile filtered) purified Ig fraction.**Purification:** Affinity Chromatography employing immobilized Rat IL-10 matrix.**Buffer System:** PBS, pH 7.2 without preservatives.**Reconstitution:** Restore in sterile water to a concentration of 0.1-1.0 mg/ml.**Applications:****Neutralization:** To yield one-half maximal inhibition [ND50] of the biological activity of Rat IL-10 (30.00 ng/ml), a concentration of 0.45-0.80 µg/ml of this antibody is required.**Indirect ELISA:** To detect Rat IL-10 by indirect ELISA (using 100 µl/well antibody solution) a concentration of 0.5-2.0 µg/ml of this antibody is required. This antigen affinity purified antibody, in conjunction with compatible secondary reagents, allows the detection of at least 0.2-0.4 ng/well of recombinant Rat IL-10.**Sandwich ELISA:** To detect Rat IL-10 by Sandwich ELISA (using 100 µl/well antibody solution) a concentration of 0.5-2.0 µg/ml of this antibody is required. This antigen affinity purified antibody, in conjunction with Biotinylated Anti-Rat IL-10 (*Cat.-No* PP1115B1 or PP1115B2) as a detection antibody, allows the detection of at least 0.2-0.4 ng/well of recombinant Rat IL-10.**Western Blot:** To detect Rat IL-10 by Western Blot analysis this antibody can be used at a concentration of 0.1-0.2 µg/ml. Used in conjunction with compatible secondary reagents the detection limit for recombinant Rat IL-10 is 1.5-3.0 ng/lane, under either

reducing or non-reducing conditions.

Other applications not tested. Optimal dilutions are dependent on conditions and should be determined by the user.

Specificity:

Recognizes Rat IL10. Other species not tested.

Add. Information:

Centrifuge vial prior to opening.

Storage:

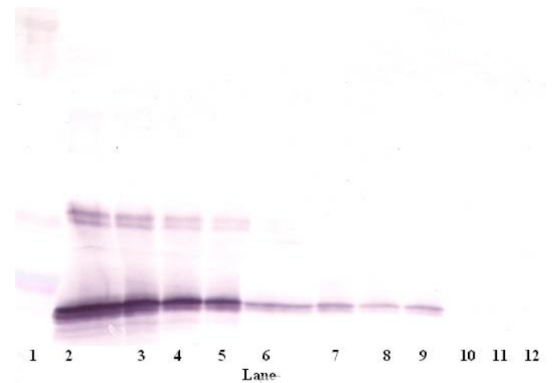
Store lyophilized at 2-8°C for 6 months or at -20°C long term.
 After reconstitution store the antibody undiluted at 2-8°C for one month or (in aliquots) at -20°C long term.
 Avoid repeated freezing and thawing.
 Shelf life: one year from despatch.

General Readings:

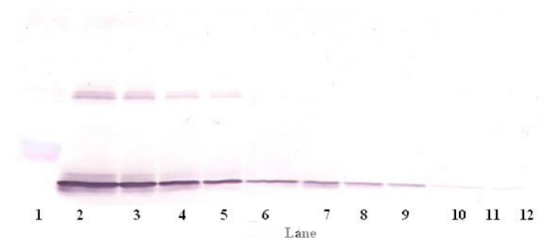
- Schif-Zuck S, Wildbaum G, Karin N. Coadministration of plasmid DNA constructs encoding an encephalitogenic determinant and IL-10 elicits regulatory T cell-mediated protective immunity in the central nervous system. *J Immunol.* 2006 Dec 1;177(11):8241-7. PubMed PMID: 17114502.
- Wildbaum G, Netzer N, Karin N. Tr1 cell-dependent active tolerance blunts the pathogenic effects of determinant spreading. *J Clin Invest.* 2002 Sep;110(5):701-10. PubMed PMID: 12208871.

Pictures:

Western Blot (Reduced)
 using Interleukin-10 / IL10 Antibody
 Cat.-No PP1115P



Western Blot (Unreduced)
 using Interleukin-10 / IL10 Antibody
 Cat.-No PP1115P



Sandwich ELISA using Interleukin-10 /
 IL10 Antibody Cat.-No PP1115P

