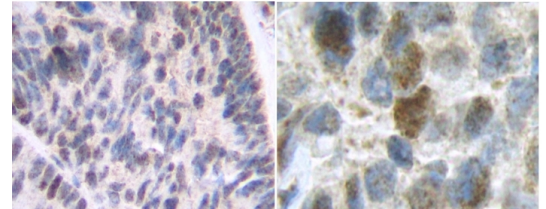


PP1107P1**Polyclonal Antibody to Osteoprotegerin / TNFRSF11B - Aff - Purified**

Alternate names:	OCIF, OPG, Osteoclastogenesis inhibitory factor, Tumor necrosis factor receptor superfamily member 11B
Quantity:	50 µg
Background:	Osteoprotegerin (OPG) is a member of the TNF receptor superfamily. This protein is an osteoblast-secreted decoy receptor that functions as a negative regulator of bone resorption. This protein specifically binds to its ligand, osteoprotegerin ligand (TNFSF11/OPGL), both of which are key extracellular regulators of osteoclast development. Studies of the mouse counterpart also suggest this protein and its ligand play a role in lymph-node organogenesis and vascular calcification. Alternatively spliced transcript variants of the gene have been reported, but their full length nature has not been determined.
Uniprot ID:	O00300
NCBI:	NP_002537.3
GeneID:	4982
Host:	Rabbit
Immunogen:	Highly purified (> 98%) <i>E. Coli</i> derived recombinant Human OPG (<i>Cat.-No</i> PA159) Remarks: Molecular Weight: 150 kDa
Format:	State: Lyophilized (sterile filtered) purified Ig fraction Purification: Affinity Chromatography employing immobilized hOPG matrix Buffer System: PBS, pH 7.2 without preservatives Reconstitution: Restore in sterile water to a concentration of 0.1-1.0 mg/ml.
Applications:	Sandwich ELISA: To detect Human OPG by Sandwich ELISA (using 100 µl/well antibody solution) a concentration of 0.5–2.0 µg/ml of this antibody is required. This antigen affinity purified antibody, in conjunction with Biotinylated anti-Human OPG antibody (<i>Cat.-No</i> PP1107B1 or PP1107B2) as a detection antibody, allows the detection of at least 0.2-0.4 ng/well of recombinant Human OPG. Western Blot To detect Human OPG by Western Blot analysis this antibody can be used at a concentration of 0.1-0.2 µg/ml. Used in conjunction with compatible secondary reagents the detection limit for recombinant Human OPG is 1.5-3.0 ng/lane, under either reducing or non-reducing conditions. Immunohistochemistry: This antibody stained Formalin-Fixed Paraffin-Embedded Sections of Human breast invasive ductal carcinoma. Use at 0.5 µg/ml with overnight incubation at 4°C. An HRP-labeled polymer detection system was used with a DAB chromogen. Heat induced antigen retrieval with a pH 6.0 Sodium Citrate buffer is recommended. Other applications not tested. Optimal dilutions are dependent on conditions and should be determined by the user.

- Specificity:** Recognizes Human Osteoprotegerin (hOPG).
Other species not tested.
- Add. Information:** Centrifuge vial prior to opening!
- Storage:** Prior to reconstitution store at 2-8°C.
Following reconstitution store undiluted at 2-8°C for one month
or (in aliquots) at -20°C for longer.
Avoid repeated freezing and thawing.
Shelf life: one year from despatch.

Pictures: Formalin-fixed, paraffin-embedded sections of human breast invasive ductal carcinoma stained with Osteoprotegerin Antibody Cat.-No PP1107P. Tissue samples were provided by the Cooperative Human Tissue Network which is funded by the National Cancer Institute.



Sandwich ELISA using Osteoprotegerin Antibody Cat.-No PP1107P

