

PRODUCT DATA SHEET

Product: Clusterin (TRPM-2), clone CLI-9

Cat. No: MC-495 (100 µg)

Specificity:

Recognizes human clusterin.

Species Reactivity:

Human, others not tested.

Ig Isotype:

Mouse IgG1

Immunogen:

Purified human clusterin (TRPM-2).

Format:

100 µl of purified antibody in PBS containing 0.02% sodium azide. Concentration is 1 mg/ml IgG. Purity ≥ 95% by SDS-PAGE.

Storage and Stability:

Stable for at least 6 months when stored at 2 - 8°C only. Do not freeze/thaw.

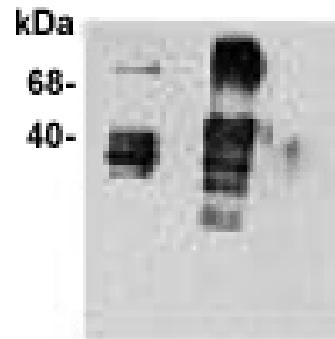
Applications and Suggested Dilutions:

- Flow Cytometry
- Immunohistochemistry: Frozen sections.
- Immunoprecipitation
- Immunocytochemistry
- Western blotting: Use at approximately 1:2000.

The optimal dilution for a specific application should be determined by the researcher.

anti-Clusterin

hClu recClu Vect



Detection of natural human Clusterin in transfected HEK 293T cells.

Limitations:

For *in vitro* research use only. Not for use in diagnostics or in humans.

Warranty:

No warranties, expressed or implied, are made regarding the use of this product. KAMIYA BIOMEDICAL COMPANY is not liable for any damage, personal injury, or economic loss caused by this product.