

Polyclonal Antibody to Glutamate - Aff - Purified

Catalog No.:	GLM23-A
Quantity:	0.1 mg
Concentration:	1 mg/ml
Background:	<p>RDC1 was originally considered to be an Adrenomedullin receptor that binds calcitonin gene-related peptide (CGRP) and adrenomedullin. RDC1 and GPRN1 represent two tissue-specific subtypes of the same 60-kDa receptor. RDC1 has the structural characteristics of a chemokine receptor. Recently it has been shown that RDC1 binds to the chemokine CXCL12 and should be considered to be a chemokine receptor. RDC1 has been reported to be expressed in human cell lines and in cultured vascular endothelial cells and in rodent brain, kidney, lung, heart, spleen, pancreas, small intestine, blood, colon, and vessel. ESTs have been isolated from human normal bone marrow, brain, breast, cartilage, embryo, eye, fetal lung/testis/B-cell, heart, heart/melanocyte/uterus, kidney, liver/spleen, nerve, placenta, and umbilical libraries as well as several human cancer libraries.</p>
Host / Isotype:	Rabbit
Immunogen:	<p>Synthetic peptide - KLH conjugated Epitope: 2nd extracellular domain of human Gene name: CXCR7 Remarks: The immunizing peptide shows 94 % identity (94 % similarity) with mouse and 100 % identity (100 % similarity) with rat.</p>
Format:	<p>State: Liquid Ig fraction Purification: Peptide immunogen affinity column Buffer System: PBS, pH 7.7, containing 0.01% sodium azide</p>
Applications:	<p>Flow Cytometry. Immunohistochemistry with formalin fixed paraffin embedded tissues: 10⁻⁶g/ml Antigen retrieval: Steam slides in 0.01 M sodium citrate buffer, pH 6.0, at 99-100°C for 20 min. Remove from heat and let stand at room temperature in buffer for 20 min. Rinse in 1x TBS with Tween (TBST) for 1 min. at room temperature. Other applications not tested. Optimal dilutions are dependent on conditions and should be determined by the user.</p>
Specificity:	<p>Reacts with G Protein-Coupled Receptor RDC1 (Family: GPCR, Subfamily: Adrenomedullin) Species: Human. Others not tested.</p>

For research and in vitro use only. Not for diagnostic or therapeutic work.

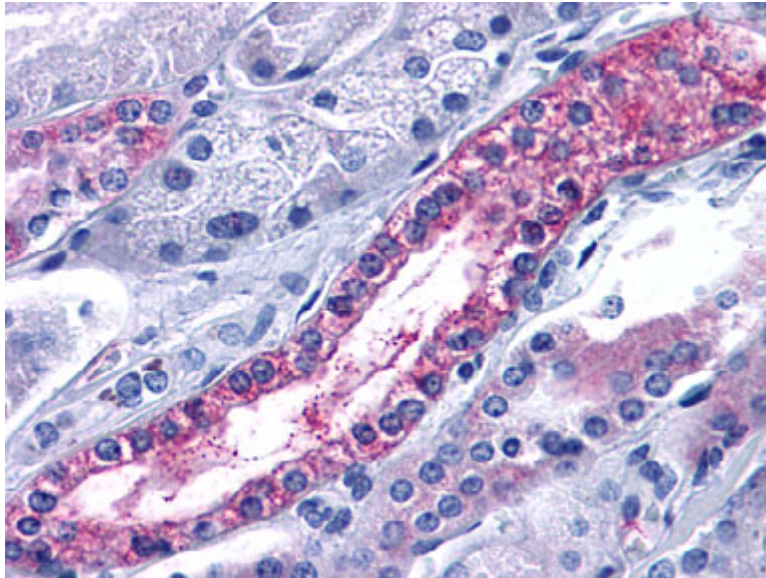
Material Safety Datasheets are available at www.acris-antibodies.com or on request.

Antibody Hotline - Technical Questions - Antibody Location Service
Free Call: 0800-2274746 (Germany only) - www.acris-antibodies.com

Storage:

Store the antibody undiluted at 2-8°C for one month or (in aliquots) at -70°C for longer.
Avoid repeated freezing and thawing.
Shelf life: one year from despatch.

Pictures:



Immunohistochemical staining of Kidney (Renal tubule) using anti- CXCR7 antibody SP4312P

For research and in vitro use only. Not for diagnostic or therapeutic work.

Material Safety Datasheets are available at www.acris-antibodies.com or on request.

Antibody Hotline - Technical Questions - Antibody Location Service
Free Call: 0800-2274746 (Germany only) - www.acris-antibodies.com