



Everest Biotech Ltd  
Cherwell Innovation Centre  
77 Heyford Park  
Upper Heyford  
Oxfordshire  
OX25 5HD, UK

[www.everestbiotech.com](http://www.everestbiotech.com)

[info@everestbiotech.com](mailto:info@everestbiotech.com)  
[sales@everestbiotech.com](mailto:sales@everestbiotech.com)

Tel +44 1869 238326  
Fax +44 1869 238327

**Research Use Only. Not  
for diagnostic or  
therapeutic use.**

Storage: Aliquot and store at  
-20°C. Minimize freezing and  
thawing.

## Product: EB08119 – Goat anti-nocturnin antibody

### **Target Protein**

Principal Names: CCRN4L ; CCR4 carbon catabolite repression 4-like (*S. cerevisiae*); CCR4L ; MGC142054 ; MGC142060 ; MGC4120817 ; MGC78549 ; NOC; CCR4 carbon catabolite repression 4-like ; CCR4-like (carbon catabolite repression 4, *S.cerevisiae*) ; nocturnin

Official Gene Symbol: CCRN4L

Accession Number(s): NP\_036250.2

Human Gene ID(s): 25819

### **Immunogen**

Peptide with sequence HLSLVCDFSFTEESD, from the C Terminus of the protein sequence according to NP\_036250.2

### **Purification**

Purified from goat serum by ammonium sulphate precipitation followed by antigen affinity chromatography using the immunizing peptide.

Supplied as 100 µg of purified antibody. 0.5 mg/ml in Tris saline, 0.02% sodium azide, pH7.3 with 0.5% bovine serum albumin.

### **Applications Tested**

Peptide ELISA: antibody detection limit dilution 14,000. Western Blot: Approx 37kDa band observed in Human Brain (Cerebellum) lysates (calculated MW of 48.2kDa according to NP\_036250.2). The observed molecular weight corresponds to earlier findings in literature with different antibodies (Garbarino-Pico et al, *JRNA*. 2007 May;13(5):745-55; PMID: 17400819). Recommended concentration: 0.3-1µg/ml.

### **Species Reactivity**

Tested: Human

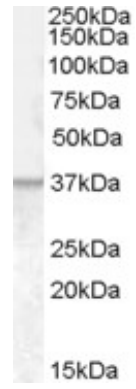
Expected from sequence similarity: Human

### **Background Reference**

Green CB, Douris N, Kojima S, Strayer CA, Fogerty J, Lourim D, Keller SR, Besharse JC.

Loss of Nocturnin, a circadian deadenylase, confers resistance to hepatic steatosis and diet-induced obesity.

*Proc Natl Acad Sci U S A*. 2007 Jun 5;104(23):9888-93. Epub 2007 May 17.  
PMID: 17517647



EB08119 (0.3 $\mu$ g/ml) staining of Human Brain (Cerebellum) lysate (35 $\mu$ g protein in RIPA buffer). Primary incubation was 1 hour. Detected by chemiluminescence.