



Everest Biotech Ltd
Cherwell Innovation Centre
77 Heyford Park
Upper Heyford
Oxfordshire
OX25 5HD, UK

www.everestbiotech.com

info@everestbiotech.com
sales@everestbiotech.com

Tel +44 1869 238326
Fax +44 1869 238327

**Research Use Only. Not
for diagnostic or
therapeutic use.**

Storage: Aliquot and store at
-20°C. Minimize freezing and
thawing.

Product: EB07818 – Goat anti-GABPB2 antibody

Target Protein

Principal Names: GABPB2; GA binding protein transcription factor, beta subunit 2; BABPB2; E4TF1; E4TF1-47; E4TF1-53; E4TF1B; GABPB; GABPB1; NRF2B1; NRF2B2; GA binding protein transcription factor, beta subunit 1, 53kDa; GA binding protein transcription factor, beta subunit 2, 47kDa; nuclear respiratory factor-2 subunit beta

Official Gene Symbol: GABPB2

Accession Number(s): NP_005245.2; NP_002032.2

Human Gene ID(s): 2553

This antibody is expected to recognise isoform beta 1 (NP_005245.2) and isoform gamma 1 (NP_002032.2).

Immunogen

Peptide with sequence C-SSENSKATDETG, from the internal region of the protein sequence according to NP_005245.2; NP_002032.2

Purification

Purified from goat serum by ammonium sulphate precipitation followed by antigen affinity chromatography using the immunizing peptide.

Supplied as 100 µg of purified antibody. 0.5 mg/ml in Tris saline, 0.02% sodium azide, pH7.3 with 0.5% bovine serum albumin.

Applications Tested

Peptide ELISA: antibody detection limit dilution 1:32,000. Western Blot: Approx 45+38kDa bands observed in lysates of cell line HeLa (calculated MW of 42.5kDa according to NP_005245.2 and of 38.1kDa according to NP_002032.2).

Recommended concentration: 0.5-1.5µg/ml.

An additional band of unknown identity was also consistently observed at 21kDa. This band was successfully blocked by incubation with the immunising peptide. We would appreciate any feedback from people in the field - have any such results been reported with other antibodies/lysates? Have any further splice variants/modified forms been reported?

Species Reactivity

Tested: Human

Expected from sequence similarity: Human, Dog

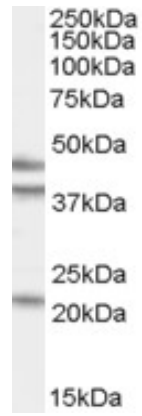
Background Reference

O'Leary DA, Koleski D, Kola I, Hertzog PJ, Ristevski S.

Identification and expression analysis of alternative transcripts of the mouse GA-binding protein (Gabp) subunits alpha and beta1.

Gene. 2005 Jan 3;344:79-92. Epub 2004 Nov 23.

PMID: 15656975



EB07818 (0.5 μ g/ml) staining of HeLa cell lysate (35 μ g protein in RIPA buffer). Primary incubation was 1 hour. Detected by chemiluminescence.