



Everest Biotech Ltd
Cherwell Innovation Centre
77 Heyford Park
Upper Heyford
Oxfordshire
OX25 5HD, UK

www.everestbiotech.com

info@everestbiotech.com
sales@everestbiotech.com

Tel +44 1869 238326
Fax +44 1869 238327

**Research Use Only. Not
for diagnostic or
therapeutic use.**

Storage: Aliquot and store at
-20°C. Minimize freezing and
thawing.

Product: EB06731 – Goat anti-Pyruvate dehydrogenase / PDHX

Target Protein

Principal Names: PDHX; E3BP; OPDX; PDX1; proX; DLDBP; pyruvate dehydrogenase complex, component X; E3-binding protein; pyruvate dehydrogenase complex, lipoyl-containing component X

Official Gene Symbol: PDHX

Accession Number(s): NP_003468.1

Human Gene ID(s): 8050

Non-Human GeneID(s): 27402 (mouse);

Gene Ontology terms: acyltransferase activity; electron transporter activity; metabolism; mitochondrion; protein binding; pyruvate dehydrogenase complex (sensu Eukaryota)

Immunogen

Peptide with sequence C-KSFKANLENPIRLA, from the C Terminus of the protein sequence according to NP_003468.1

Purification

Purified from goat serum by ammonium sulphate precipitation followed by antigen affinity chromatography using the immunizing peptide.

Supplied as 100 µg of purified antibody. 0.5 mg/ml in Tris saline, 0.02% sodium azide, pH7.3 with 0.5% bovine serum albumin.

Applications Tested

Peptide ELISA: antibody detection limit dilution 1:32,000. Western Blot: Approx 50kDa band observed in Human Pancreas lysate (calculated MW of 54.2kDa according to NP_003468.1). Recommended concentration: 0.1-1 µg/ml. Immunohistochemistry: In paraffin embedded Human Pancreas, shows cytoplasmic staining of acinar cells, islets of Langerhans and peri-pancreatic fat cells. Recommended concentration, 1-3 µg/ml.

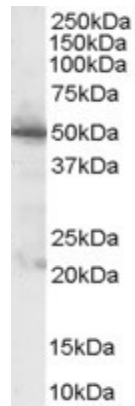
Species Reactivity

Tested: Human

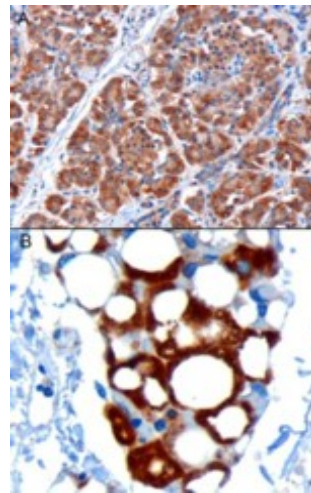
Expected from sequence similarity: Human, Rat, Mouse, Chimpanzee

Background Reference

Li Y, Cao X, Li LX, Brubaker PL, Edlund H, Drucker DJ.
{beta}-Cell Pdx1 Expression Is Essential for the Glucoregulatory, Proliferative, and Cytoprotective Actions of Glucagon-Like Peptide-1.
Diabetes. 2005 Feb;54(2):482-91.
PMID: 15677506



EB06371 (1 μ g/ml) staining of Human Pancreas lysate (35 μ g protein in RIPA buffer). Primary incubation was 1 hour. Detected by chemiluminescence.



EB06371 staining of paraffin embedded Human Pancreas. A) Microwaved antigen retrieval with citrate buffer pH 6 (3 μ g/ml), HRP-staining. B) Microwaved antigen retrieval with Tris/EDTA buffer pH9 (1 μ g/ml) , HRP-staining.