



Everest Biotech Ltd
Cherwell Innovation Centre
77 Heyford Park
Upper Heyford
Oxfordshire
OX25 5HD, UK

www.everestbiotech.com

info@everestbiotech.com
sales@everestbiotech.com

Tel +44 1869 238326
Fax +44 1869 238327

**Research Use Only. Not
for diagnostic or
therapeutic use.**

Storage: Aliquot and store at
-20°C. Minimize freezing and
thawing.

Product: EB06186 – Goat anti-ALP / PDLIM3

Target Protein

Principal Names: ALP; alpha-actinin-2-associated LIM protein; enigma homolog; PDLIM3; PDZ and LIM domain 3

Official Gene Symbol: PDLIM3

Accession Number(s): NP_055291

Human Gene ID(s): 27295

Non-Human GeneID(s): 53318 (mouse); 114108 (rat);

Immunogen

Peptide with sequence C-PEGYDVTLYPKA, from the C Terminus of the protein sequence according to NP_055291

Purification

Purified from goat serum by ammonium sulphate precipitation followed by antigen affinity chromatography using the immunizing peptide.

Supplied as 100 µg of purified antibody. 0.5 mg/ml in Tris saline, 0.02% sodium azide, pH7.3 with 0.5% bovine serum albumin.

Applications Tested

Peptide ELISA: antibody detection limit dilution >1:32,000. Western Blot: Prominent band of approx 39 kD observed in Human Muscle lysate and a much less intense band of approx 35 kD in Human Heart lysate (predicted MWs of 42kDa according to NP_055291). Recommended for use at 0.1-0.5µg/ml.

Species Reactivity

Tested: Human

Expected from sequence similarity: Human, Mouse, Rat

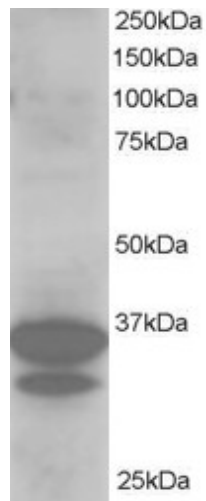
Background Reference

Xia H, Winokur ST, Kuo WL, Altherr MR, Bredt DS.

Actinin-associated LIM protein: identification of a domain interaction between PDZ and spectrin-like repeat motifs.

J Cell Biol. 1997 Oct 20;139(2):507-15.

PMID: 9334352



EB06186 staining (0.5 μ g/ml) of Human Heart lysate (RIPA buffer, 30 μ g total protein per lane). Primary incubated for 1 hour. Detected by western blot using chemiluminescence.