



Everest Biotech Ltd  
Cherwell Innovation Centre  
77 Heyford Park  
Upper Heyford  
Oxfordshire  
OX25 5HD, United Kingdom

[everestbiotech.com](http://everestbiotech.com)

[sales@everestbiotech.com](mailto:sales@everestbiotech.com)

[support@everestbiotech.com](mailto:support@everestbiotech.com)

Tel +44 1869 238326

Fax +44 1869 238327

**Research Use Only. Not for diagnostic or therapeutic use.**

Storage: For long-term storage keep aliquots at -20°C. (Store no longer than 12 months at 4°C). Minimize freezing and thawing.

## EB05889 - Goat Anti-RNF34 / RFI (N Terminus) Antibody

Size: 100µg specific antibody in 200µl

### Target Protein

**Principal Names:** caspases-8 and -10-associated RING finger protein 1, FLJ21786, CARP1, hRFI, FYVE-RING finger protein MOMO, RING finger protein RIFF, FLJ21786, RIFF, RIF, RFI, ring finger protein 34, RNF34

**Official Symbol:** RNF34

**Accession Number(s):** NP\_919247.1; NP\_079402.2

**Human GeneID(s):** [80196](#)

**Non-Human GeneID(s):** 80751 (mouse), 282845 (rat)

**Important Comments:** This antibody is expected to recognize both reported isoforms (NP\_919247.1 and NP\_079402.2).

### Immunogen

Peptide with sequence KAGATSMWASCC, from the N Terminus of the protein sequence according to NP\_919247.1; NP\_079402.2.

Please note the [peptide](#) is available for sale.

### Purification and Storage

Purified from goat serum by ammonium sulphate precipitation followed by antigen affinity chromatography using the immunizing peptide.

Supplied at 0.5 mg/ml in Tris saline, 0.02% sodium azide, pH7.3 with 0.5% bovine serum albumin.

Aliquot and store at -20°C. Minimize freezing and thawing.

### Applications Tested

**Peptide ELISA:** antibody detection limit dilution 1:32000.

**Western blot:** No signal obtained yet but low background observed in Human Testis lysate at up to 1µg/ml. We would appreciate any feedback from people in the field - have any results been reported with other antibodies/lysates?

**IHC:** In paraffin embedded Human Kidney shows strong staining of cytoplasm in DCT. Recommended concentration, 3-5µg/ml.

### Species Reactivity

**Tested:** Human

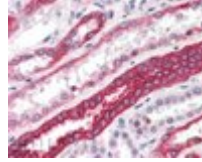
**Expected from sequence similarity:** Human, Mouse, Rat, Dog, Cow

### Background Reference

Sasaki S, Nakamura T, Arakawa H, Mori M, Watanabe T, Nagawa H, Croce CM. Isolation and characterization of a novel gene, hRFI, preferentially expressed in esophageal cancer.

Oncogene. 2002 Jul 25;21(32):5024-30.

**PMID:** 12118383



EB05889 (3.8µg/ml) staining of paraffin embedded Human Kidney. Steamed antigen retrieval with citrate buffer pH 6, AP-staining.