



Everest Biotech Ltd
Cherwell Innovation Centre
77 Heyford Park
Upper Heyford
Oxfordshire
OX25 5HD, UK

www.everestbiotech.com

info@everestbiotech.com
sales@everestbiotech.com

Tel +44 1869 238326
Fax +44 1869 238327

**Research Use Only. Not
for diagnostic or
therapeutic use.**

Storage: Aliquot and store at
-20°C. Minimize freezing and
thawing.

Product: EB05547 – Goat anti-ARL4D / ARL4L

Target Protein

Principal Names: ARF4L; ADP-ribosylation factor 4-like; ARL6; ADP-ribosylation factor-like 6; ARL4D; ADP-ribosylation factor-like 4D

Official Gene Symbol: ARL4D

Accession Number(s): NP_001652

Human Gene ID(s): 379

Non-Human GeneID(s): 80981 (mouse);

Gene Ontology terms: protein secretion; ARF small monomeric GTPase; non-selective vesicle transport

Immunogen

Peptide with sequence C-GNHLTEMAPTASS, from the N Terminus of the protein sequence according to NP_001652

Purification

Purified from goat serum by ammonium sulphate precipitation followed by antigen affinity chromatography using the immunizing peptide.

Supplied as 100 µg of purified antibody. 0.5 mg/ml in Tris saline, 0.02% sodium azide, pH7.3 with 0.5% bovine serum albumin.

Applications Tested

Peptide ELISA: antibody detection limit dilution >1:32,000. Western Blot: Approx 23-25kDa band observed in Human Lung and Placenta lysates (predicted MW of 23kDa according to NP_001652). Recommended for use at 1-3µg/ml.

Species Reactivity

Tested: Human

Expected from sequence similarity: Human, Mouse

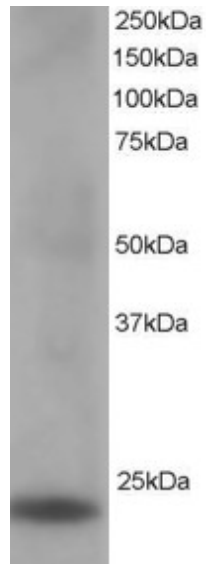
Background Reference

Pettersson M, Bessonova M, Gu HF, Groop LC, Jonsson JI.

Characterization, chromosomal localization, and expression during hematopoietic differentiation of the gene encoding Arl6ip, ADP-ribosylation-like factor-6 interacting protein (ARL6).

Genomics 2000 Sep 15;68(3):351-4

PMID: 10995579



EB05547 staining (1 μ g/ml) of Lung lysate (RIPA buffer, 35 μ g total protein per lane). Primary incubated for 1 hour. Detected by western blot using chemiluminescence.