



Everest Biotech Ltd  
Cherwell Innovation Centre  
77 Heyford Park  
Upper Heyford  
Oxfordshire  
OX25 5HD, UK

[www.everestbiotech.com](http://www.everestbiotech.com)

[info@everestbiotech.com](mailto:info@everestbiotech.com)  
[sales@everestbiotech.com](mailto:sales@everestbiotech.com)

Tel +44 1869 238326  
Fax +44 1869 238327

**Research Use Only. Not  
for diagnostic or  
therapeutic use.**

Storage: Aliquot and store at  
-20°C. Minimize freezing and  
thawing.

## Product: EB05475 – Goat anti-KLF2 / LKLF

### **Target Protein**

Principal Names: KLF2; Kruppel-like factor 2 (lung); LKLF; Kruppel-like factor LKLF;  
lung Kruppel-like zinc finger transcription factor

Official Gene Symbol: KLF2

Accession Number(s): NP\_057354

Human Gene ID(s): 10365

Non-Human GeneID(s): 16598 (mouse);

Gene Ontology terms: regulation of transcription, DNA-dependent; transcription factor  
activity; transcriptional activator activity; zinc ion binding;

### **Immunogen**

Peptide with sequence C-ALSEPILPSFST, from the N Terminus of the protein  
sequence according to NP\_057354

### **Purification**

Purified from goat serum by ammonium sulphate precipitation followed by antigen  
affinity chromatography using the immunizing peptide.

Supplied as 100 µg of purified antibody. 0.5 mg/ml in Tris saline, 0.02% sodium  
azide, pH7.3 with 0.5% bovine serum albumin.

### **Applications Tested**

Peptide ELISA: antibody detection limit dilution 1:32,000. Western Blot: Approx  
40kDa band observed in Human Heart lysates (predicted MW of 41kDa according to  
NP\_057354). Recommended for use at 1.5-3µg/ml.

### **Species Reactivity**

Tested: Human

Expected from sequence similarity: Human, Mouse, Rat

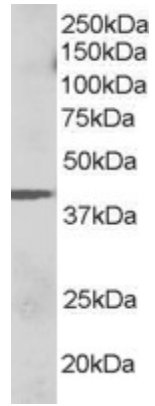
### **Background Reference**

Anderson KP, Kern CB, Crable SC, Lingrel JB.

Isolation of a gene encoding a functional zinc finger protein homologous to  
erythroid Kruppel-like factor: identification of a new multigene family.

Mol Cell Biol. 1995 Nov;15(11):5957-65.

PMID: 7565748



EB05475 staining (1.5 $\mu$ g/ml) of Human Heart lysate (RIPA buffer, 35 $\mu$ g total protein per lane). Primary incubated for 1 hour. Detected by western blot using chemiluminescence.