



Everest Biotech Ltd  
Cherwell Innovation Centre  
77 Heyford Park  
Upper Heyford  
Oxfordshire  
OX25 5HD, UK

[www.everestbiotech.com](http://www.everestbiotech.com)

[info@everestbiotech.com](mailto:info@everestbiotech.com)  
[sales@everestbiotech.com](mailto:sales@everestbiotech.com)

Tel +44 1869 238326  
Fax +44 1869 238327

**Research Use Only. Not  
for diagnostic or  
therapeutic use.**

Storage: Aliquot and store at  
-20°C. Minimize freezing and  
thawing.

## Product: EB05148 – Goat anti-SET / I2 alpha PP2A

### **Target Protein**

Principal Names: SET; 2PP2A; IGAAD; I2PP2A; PHAPII; TAF-IBETA; SET translocation (myeloid leukemia-associated); SET gene; SET, translocation

Official Gene Symbol: SET

Accession Number(s): AAC50460.1

Human Gene ID(s): 6418

Gene Ontology terms: protein phosphatase inhibitor activity; DNA replication factor; nucleosome assembly; DNA replication; oncogenesis; nucleus

The peptide sequence used (from AAC50460.1) differs by one residue from the RefSeq entry (NP\_003002.1) and the three other Genbank protein sequences referenced in the Locuslink entry. It is not known whether this difference is due to a sequencing error or polymorphism but the antibody is expected to recognize both sequences.

### **Immunogen**

Peptide with sequence C-SAPAAKVSKKELNS, from the N Terminus of the protein sequence according to AAC50460.1

### **Purification**

Purified from goat serum by ammonium sulphate precipitation followed by antigen affinity chromatography using the immunizing peptide.

Supplied as 100 µg of purified antibody. 0.5 mg/ml in Tris saline, 0.02% sodium azide, pH7.3 with 0.5% bovine serum albumin.

### **Applications Tested**

Western blot: Approx 20-25kDa and 40kDa bands seen in Human Kidney extracts. Recommended for use at 1-3µg/ml.

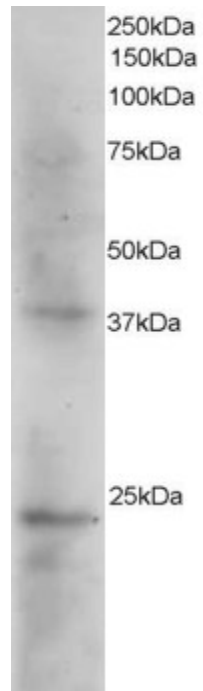
### **Species Reactivity**

Tested: Human

Expected from sequence similarity: Human

### **Background Reference**

Ozbun LL, You L, Kiang S, Angdisen J, Martinez A, Jakowlew SB.  
Identification of differentially expressed nucleolar TGF-beta1 target (DENTT) in human lung cancer cells that is a new member of the TSPY/SET/NAP-1 superfamily. Genomics 2001 Apr 15;73(2):179-93  
PMID: 11318608



EB05148 staining (2 $\mu$ g/ml) of Human Kidney extracts (RIPA buffer, 35 $\mu$ g total protein per lane). Primary incubated for 1 hour. Detected by western blot using chemiluminescence.