



Everest Biotech Ltd  
Cherwell Innovation Centre  
77 Heyford Park  
Upper Heyford  
Oxfordshire  
OX25 5HD, UK

[www.everestbiotech.com](http://www.everestbiotech.com)

[info@everestbiotech.com](mailto:info@everestbiotech.com)  
[sales@everestbiotech.com](mailto:sales@everestbiotech.com)

Tel +44 1869 238326  
Fax +44 1869 238327

**Research Use Only. Not  
for diagnostic or  
therapeutic use.**

**Related Products**  
EB07138

Storage: For long-term  
storage keep aliquots at  
-20°C. (Store no longer than  
12 months at 4°C). Minimize  
freezing and thawing.

## **EB05049 – Goat anti-ALDH1A1 (C Terminus) antibody**

**Size: 100µg specific antibody in 200µl**

## **EB05049-T – Goat anti-ALDH1A1 (C Terminus) antibody, Trial Size**

**Size: 20µg specific antibody in 40µl**

### ***Target Protein***

Principal Names: ALDH1A1; aldehyde dehydrogenase 1 family, member A1; ALDC; ALDH-E1; ALDH1; ALDH11; MGC2318; PUMB1; RALDH1; ALDH class 1; acetaldehyde dehydrogenase 1; aldehyde dehydrogenase 1, soluble; aldehyde dehydrogenase 1A1; aldehyde dehydrogenase, liver cytosolic; retinal dehydrogenase 1

Official Gene Symbol: ALDH1A1

Accession Number(s): NP\_000680.2

Human Gene ID(s): 216

Gene Ontology terms: aldehyde dehydrogenase (NAD+) activity; androgen binding; electron transporter activity; aldehyde metabolism; cytosol; oxidoreductase activity

This antibody may cross-react with ALDH1A2 (GeneID 8854) with one residue difference from this design and with ALDH2 (GeneID 217) with two residues difference from this design.

### ***Immunogen***

Peptide with sequence C-EVKTVTVKISQKNS, from the C Terminus of the protein sequence according to NP\_000680.2

### ***Purification***

Purified from goat serum by ammonium sulphate precipitation followed by antigen affinity chromatography using the immunizing peptide.

Supplied at 0.5 mg/ml in Tris saline, 0.02% sodium azide, pH7.3 with 0.5% bovine serum albumin.

### ***Applications Tested***

Peptide ELISA: antibody detection limit dilution 1:16,000. Western Blot: Approx 55kDa band observed in human liver lysates (calculated MW of 54.9kDa according to NP\_000680.2). Recommended concentration: 0.03-0.1µg/ml.

### ***Species Reactivity***

Tested: Human

Expected from sequence similarity: Human, Mouse, Rat, Dog

### ***Product Specific Reference***

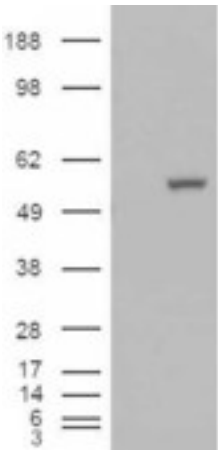
The goat polyclonal antibody used in these papers was manufactured by us:

Iwata M. Retinoic acid imprints gut-homing specificity on T cells. Immunity. 2004 Oct;21(4):527-38.  
PMID: 15485630

Yoon M et al. Developmental expression of aldehyde dehydrogenase in rat: a comparison of liver and lung development. Toxicol Sci. 2006 Feb;89(2):386-98. Epub 2005 Nov 16.



EB05049 staining (0.03μg/ml) of human liver lysate (RIPA buffer, 35μg total protein per lane). Primary incubated for 1 hour. Detected by western blot using chemiluminescence.



HEK293 overexpressing ALDH1A1 and probed with EB05049 (mock transfection in first lane).