

Monoclonal Antibody to T-Cell Receptor TCR Vb 8.1, 8.2 - PE

Alternate names: TCR V beta8, TCR Vb8

Catalog No.: CL081R

Quantity: 50 µg

Concentration: 0.1 mg/ml

Host / Isotype: Mouse / IgG2a

Clone: KT-8E

Format: **State:** Liquid purified IgG fraction.
Buffer System: PBS with 0.09% sodium azide as preservative and EIA grade BSA as a stabilizing protein to bring total protein concentration to 4-5 mg/ml.
Label: PE – conjugated

Applications: This antibody is suitable for use in Flow cytometry (use 1µg to label 10e6 cells). Other applications not tested. Optimal dilutions are dependent on conditions and should be determined by the user.

Specificity: Anti-mouse V 8.2, 8.3 TCR monoclonal antibody reacts with mouse TCR Vbeta 8.2, 8.3, bearing T cells.

Storage: Store the antibody at 2-8°C.
DO Not FREEZE!
This product is photosensitive and should be protected from light.
Shelf life: one year from despatch.

General Readings: 1. Tomonari, K., Immunogeni (in press).

Protocols: **FLOW CYTOMETRY ANALYSIS:**

Method:

1. Prepare a cell suspension in media A. For cell preparations, deplete the red blood cell population.
2. Wash 2 times.
3. Resuspend the cells to a concentration of 2x10⁷ cells/ml in media A. Add 50 µl of this suspension to each tube (each tube will then contain 1x10⁶ cells, representing 1 test).
4. To each tube, add 1 µg* of CL081R per 10⁶ cells.
5. Vortex the tubes to ensure thorough mixing of antibody and cells.
6. Incubate the tubes for 30 minutes at 4°C.
7. Wash 2 times at 4°C.
8. Resuspend the cell pellet in 50 µl ice cold media B.
9. Transfer to suitable tubes for flow cytometric analysis containing 15 µl of propidium iodide at 0.5 mg/ml in PBS. This stains dead cells by intercalating in DNA.

Media:

A. Phosphate buffered saline (pH 7.2) + 5% normal serum of host species + sodium azide (100 µl of 2M sodium azide in 100 mls).

B. Phosphate buffered saline (pH 7.2) + 0.5% Bovine serum albumin + sodium azide (100 µl of 2M sodium azide in 100 mls).

Results-Tissue Distribution:

Mouse Strain: BALB/c

Cell Concentration: 1x10⁶ cells per test

Antibody Concentration Used: 1 µg/10⁶ cells

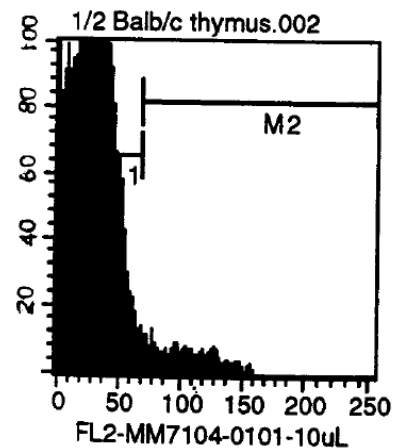
Isotypic Control: PE Mouse IgG2a

Cell Source: Thymus

Percentage of cells stained above control: 5.7%

N.B. Appropriate control samples should always be included in any labelling studies.

* For optimal results in various applications, it is recommended that each investigator determine dilutions appropriate for individual use.

Pictures:

LFL2