

Polyclonal Antibody to pCIP/p300 - Serum

Catalog No.:	CIP11-S
Quantity:	0.1 ml
Concentration:	1 mg/ml
Background:	<p>Edg2, a Lysophospholipid/Lysosphingolipid Receptor, mediates growth factor-like activities such as proliferation, platelet aggregation, and chemotaxis. Edg2 is involved in myelin formation or maintenance. It is activated by platelet-derived lysophosphatidic acid (LPA), a lipid metabolite present in serum that acts ubiquitously. Although alternate translation start codons and polyadenylation sites have been reported, the alternative splicing transcripts each encode identical proteins.</p> <p>Edg2 has been reported in most human tissues, and is especially abundant in brain cortical regions. ESTs have been isolated from bone, brain, breast, connective tissue, embryo, heart/melanocyte/uterus, lung, prostate, and uterus libraries.</p>
Host / Isotype:	Rabbit
Immunogen:	<p>Synthetic peptide - KLH conjugated Epitope: 3rd cytoplasmic domain of human Genename: EDG2 Remarks: The immunizing peptide shows 100 % identity (100 % similarity) with mouse and 100 % identity (100 % similarity) with rat.</p>
Format:	<p>State: Liquid Ig fraction Purification: Peptide immunogen affinity column Buffer System: PBS, pH 7.7, containing 0.01% sodium azide</p>
Applications:	<p>Immunohistochemistry on paraffin embedded sections: 2-3 µg/ml Antigen retrieval: Steam slides in 0.01 M sodium citrate buffer, pH 6.0, at 99-100°C for 20 min. Remove from heat and let stand at room temperature in buffer for 20 min. Rinse in 1x TBS with Tween (TBST) for 1 min. at room temperature. Other applications not tested. Optimal dilutions are dependent on conditions and should be determined by the user.</p>
Specificity:	<p>Detects Lysophosphatidic Acid Receptor Edg2/LPA1 (Family: GPCR, Subfamily: Lysophospholipid/Lysosphingolipid) Species: Human. Others not tested.</p>
Add. Information:	This product was originally produced by MBL International.

For research and in vitro use only. Not for diagnostic or therapeutic work.

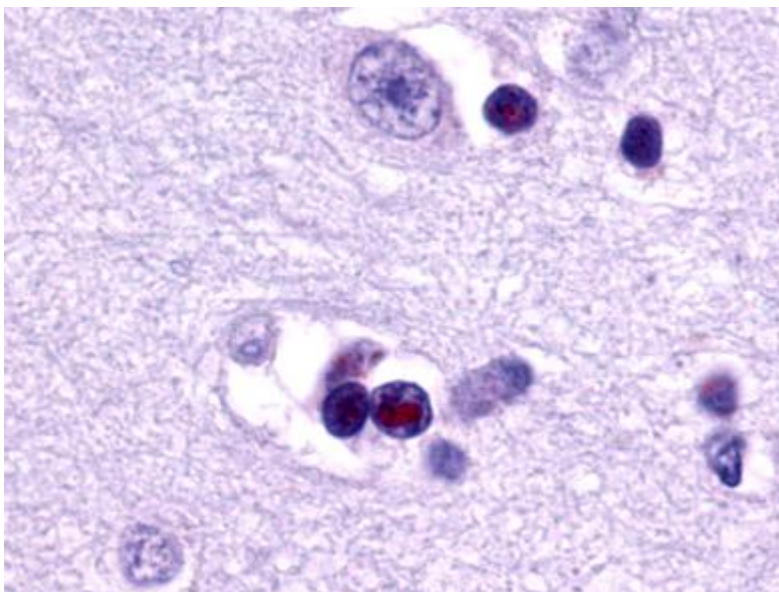
Material Safety Datasheets are available at www.acris-antibodies.com or on request.

Antibody Hotline - Technical Questions - Antibody Location Service
Free Call: 0800-2274746 (Germany only) - www.acris-antibodies.com

Storage:

Store the antibody undiluted at 2-8°C for one month or (in aliquots) at -70°C for longer.
Avoid repeated freezing and thawing.
Shelf life: one year from despatch.

Pictures:



Immunohistochemical staining of Brain (Neuron and Glia) using anti- EDG2 antibody SP4371P

For research and in vitro use only. Not for diagnostic or therapeutic work.

Material Safety Datasheets are available at www.acris-antibodies.com or on request.

Antibody Hotline - Technical Questions - Antibody Location Service
Free Call: 0800-2274746 (Germany only) - www.acris-antibodies.com