

**AR52074PU-S****Human 14-3-3 protein eta (1-246) - Purified****Alternate names:**

Protein AS1, YWHA1, YWHAH

**Quantity:**

0.1 mg

**Concentration:**

1.0 mg/ml (determined by absorbance at 280nm)

**Background:**

14-3-3 eta also as known as YWHAH. This protein belong to the 14-3-3 family of proteins which mediate sigl transduction by binding to phosphoserine-containing proteins. 14-3-3 eta interacts with and relocalizes the A20 zinc finger protein from the insoluble to the soluble fraction, suggesting a chaperone function. It implicated in the regulation of a large spectrum of both general and specialized sigling pathways. Binding to a large number of partners, usually by recognition of a phosphothreonine motif. Recombint Human 14-3-3 eta was expressed in E.coli and purified by using conventiol chromatography techniques.

**Uniprot ID:**[Q04917](#)**NCBI:**[NP\\_003396](#)**Species:**

Human

**Source:**

E. coli

**Format:****State:** Liquid purified protein**Purity:** >90% by SDS - PAGE**Buffer System:** Phosphate Buffered Saline (pH 7.4) containing 10% glycerol.**Description:****AA Sequence:**

MGDREQLLQR ARLAEQAERY DDMASAMKAV TELNEPLSNE DRNLLSVAYK NVVGARRSSW  
RVISSIEQKT MADGNEKKLE KVKAYREKIE KELETVCNDV LSLLDKFLIK NCNDFQYESK  
VFYLMKMGDY YRYLAEVASG EKKNSVVEAS EAAYKEAFEI SKEQMOPHP IRLGLALNFS  
VFYYEIQNAP EQACLLAKQA FDDAIAELDT LNEDSYKDST LIMQLLRDNL TLWTSDDQDE EAGEGN

**Molecular weight:** 28.2 kDa (246aa)**Storage:**

Store undiluted at 2-8°C for one week or (in aliquots) at -20°C to -80°C for longer.

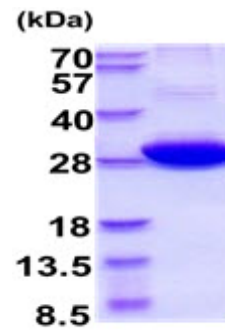
Avoid repeated freezing and thawing.

Shelf life: one year from despatch.

**General Readings:**

Maksymowych WP., et al. (2014) Arthritis Res Ther. 16(2): R99. Sato S., et al. (2002) J Biol Chem. 277: 39360-39367

Pictures:



15% SDS-PAGE (3ug)