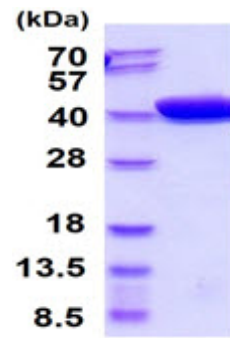


AR52073PU-S**E. coli Maltose Binding Protein Tag / MBP-Tag (27-396) - Purified**

Alternate names:	MMBP, Maltodextrin-binding protein, malE-Tag
Quantity:	0.1 mg
Concentration:	1.0 mg/ml (determined by absorbance at 280nm)
Background:	MBP also as known as Maltose Binding Protein is a protein related with the maltose/maltodextrin system of Escherichia coli, which is responsible for the uptake and efficient catabolism of maltodextrins. It is a complex regulatory and transport system involving many proteins and protein complexes. MBP has been used to increase the yield of its fusion partner in many cases. In addition, MBP is often able to promote the solubility of polypeptides to which it is fused. Recombinant MBP was expressed in E.coli and purified by conventional chromatography techniques.
Uniprot ID:	POAEX9
NCBI:	NP_418458
Species:	E. coli
Source:	E. coli
Format:	State: Liquid purified protein Purity: >95% by SDS - PAGE Buffer System: Phosphate buffered saline (pH 7.4) containing 10% glycerol.
Description:	AA Sequence: MKIEEGKLVI WINGDKGYNG LAEVGKKFEK DTGIKVTVEH PDKLEEKFPQ VAATGDGPDI IFWAHDRFGG YAQSGLLAEI TPKAFQDKL YPFTWDAVRY NGKLIAYPIA VEALSLIYNK DLLPNPPKTW EEIPALDKEL KAKGKSALMF NLQEPYFTWP LIAADGGYAF KYENKDYDIK DVGVDNAGAK AGLTFLVDLI KNKHMNADTD YSIAEAAFNK GETAMTINGP WAWSNIDTSK VNYGVTVLPT FKGQPSKPFV GVLSAGINAA SPNKELAKEF LENYLLTDEG LEAVNKDKPL GAVALKSYEE ELAKDPRIAA TMENAQKGEI MPNIPQMSAF WYAVRTAVIN AASGRQTVE ALKDAQTRIT K Molecular weight: 40.8 kDa (371 aa)
Storage:	Store undiluted at 2-8°C for one week or (in aliquots) at -20°C to -80°C for longer. Avoid repeated freezing and thawing. Shelf life: one year from despatch.
General Readings:	Fox JD., et al. (2001) Protein Sci. 10(3): 622-30. Riggs P., et al. (2000) Mol. Biotechnol. 15(1): 51-63.

Pictures:



15% SDS-PAGE (3ug)