

AR52053PU-S**Human CD120a / TNFR1 (30-211, hlgG-His tag) - Purified****Alternate names:**

TNF-R1, TNF-RI, TNFR-I, Tnfrsf1a, Tumor necrosis factor receptor 1, Tumor necrosis factor receptor superfamily member 1A, Tumor necrosis factor receptor type I, p55, p60

Quantity:

50 µg

Concentration:

0.5 mg/ml (determined by absorbance at 280nm)

Background:

TNFRSF1A, also known as tumor necrosis factor receptor superfamily member 1A, is a member of CD family, tumor necrosis factor receptor superfamily. It is one of the most primary receptors for the tumor necrosis factor-alpha. It has been shown to be localized to both plasma membrane lipid rafts and the trans golgi complex with the help of the death domain. Recombinant human TNFRSF1A, fused to hlgG-His-tag at C-terminus, was expressed in insect cell and purified by using conventional chromatography techniques.

Uniprot ID:

[P19438](#)

NCBI:

[NP_001056](#)

Species:

Human

Format:

State: Liquid purified protein

Purity: >90% by SDS - PAGE

Buffer System: Phosphate Buffered Saline (pH 7.4) containing 10% glycerol.

Endotoxin Level: < 1.0 EU per 1 microgram of protein (determined by LAL method)

Description:**AA Sequence:**

ADPLVPHLGD REKRDSVCPQ GKYIHPQNS ICCTKCHKGT YLYNDCPGPG QDTDCRECES
GSFTASENHL RHCLSCSKCR KEMGQVEISS CTVDRDTVCG CRKNQYRHYW SENLFQCFNC
SLCLNGTVHL SCQEKQNTVC TCHAGFFLRE NECVSCSNCK KSLECTKLCL PQIENVKQTE
DSGTTLEPKS CDKTHTCPPC PAPELLGGPS VFLFPPKPKD TLMISRTPEV TCVVVDVSHE
DPEVKFNWYV DGVEVHNAKT KPREEQYNST YRVVSVLTVL HQDWLNGKEY KCKVSNKALP
APIEKTISKA KGQPREPQVY TLPPSRDELT KNQVSLTCLV KGFYPSDIAV EWESNGQPEN
NYKTTTPVLD SDGSFFLYSK LTVDKSRWQQ GNVFSCVMH EALHNHYTQK SLSLSPGKHH HHHH

Molecular weight: 47.7 kDa (424aa)

Storage:

Store undiluted at 2-8°C for one week or (in aliquots) at -20°C to -80°C for longer.

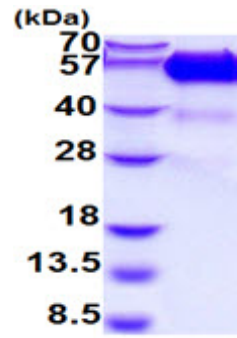
Avoid repeated freezing and thawing.

Shelf life: one year from despatch.

General Readings:

Zola H., et al. (2007) J Immunol Methods. 318:1-5. Cottin V., et al. (2002) J Immunol. 168:4095-4102.

Pictures:



15% SDS-PAGE (3ug)