

AR52035PU-N**Mouse Cathepsin B (18-339, His-tag) - Purified****Alternate names:**

APP secretase, APPS, CPSB, CTSB, Cathepsin B1

Quantity:

0.25 mg

Concentration:

0.5 mg/ml (determined by absorbance at 280nm)

Background:

CTSB, also known as cathepsin B preproprotein, is a papain-family cysteine protease that is normally located in lysosomes. It has the ability to degrade several extracellular matrix components at both neutral and acidic pH and has been implicated in the progression of several human and rodent tumors progression and arthritis. Recombinant mouse CTSB, fused to His-tag at C-terminus, was expressed in insect cell and purified by using conventiol chromatography techniques.

Uniprot ID:[P10605](#)**NCBI:**[NP_031824](#)**Species:**

Mouse

Format:**State:** Liquid purified protein**Purity:** >90% by SDS - PAGE**Buffer System:** Phosphate Buffered Saline (pH 7.4) containing 10% glycerol.**Endotoxin Level:** < 1.0 EU per 1 microgram of protein (determined by LAL method)**Description:****AA Sequence:**

HDKPSFHPLS DDLINYINKQ NTTWQAGRNF YNVDISYLKK LCGTVLGGPK LPGRVAFGED
IDLPEFDAR EQWSNCPTIG QIRDQSCGS CWAFGAVEAI SDRTC IHTNG RVNVEVSAED
LLTCCGIQCG DGCNGGYPSG AWSFWTKKGL VSGGVYNHSHV GCLPYTIPPC EHHVNGSRPP
CTGEGDTPRC NKSCEAGYSP SYKEDKHFGY TSYSVSNSVK EIMAEIYKNG PVEGAFTVFS
DFLTYKSGVY KHEAGDMMGG HAIRILGWGV ENGVPLYLAA NSWNLDWGDN GFFKILRGEN
HCGIESEIVA GIPRTDQYWG RFLEHHHHHH

Molecular weight: 36.4 kDa (330aa)**Storage:**

Store undiluted at 2-8°C for one week or (in aliquots) at -20°C to -80°C for longer.

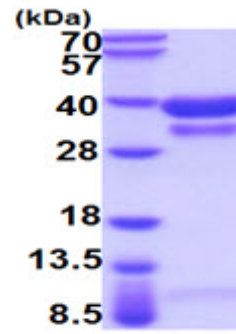
Avoid repeated freezing and thawing.

Shelf life: one year from despatch.

General Readings:

Podgorski I., et al. (2003) Biochem Soc Symp. 70:263-276. Roshy S., et al. (2003) Cancer Metastasis Rev. 22:271-286.

Pictures:



15% SDS-PAGE (3ug)