

AR51999PU-S**Human CD131 / CSF2RB (17-443, His-tag) - Purified****Alternate names:**

Cytokine receptor common subunit beta, GM-CSF-RB, GM-CSF/IL-3/IL-5 receptor common beta-chain, IL3RB, IL5RB

Quantity:

50 µg

Concentration:

0.5 mg/ml (determined by absorbance at 280nm)

Background:

CSF2RB, also known as cytokine receptor common subunit beta, is a high affinity receptor for interleukin-3, interleukin-5 and granulocyte-macrophage colony-stimulating factor. This unusual form of receptor assembly likely applies also to IL-3 and IL-5 receptors, providing a structural basis for understanding their mechanism of activation and for the development of therapeutics. Recombinant human CSF2RB, fused to His-tag at C-terminus, was expressed in insect cell and purified by using conventional chromatography techniques.

Uniprot ID:

[P32927](#)

NCBI:

[NP_000386](#)

GeneID:

[1439](#)

Species:

Human

Source:

Insect cells

Format:

State: Liquid purified protein

Purity: >95% by SDS – PAGE

Buffer System: Phosphate Buffered Saline (pH 7.4) containing 10% glycerol.

Endotoxin Level: < 1.0 EU per 1 microgram of protein (determined by LAL method)

Description:**AA Sequence:**

WERSLAGAEE TIPLQTLRCY NDYTSHITCR WADTQDAQRL VNVTLIRRVN EDLLEPVSCD
LSDDMPWSAC PHPRCVPRRC VIPCQSFVVT DVDYFSFQPD RPLGTRLTVT LTQHVQPPEP
RDLQISTDQD HFLLTWSVAL GSPQSHWLSV GDLEFEVYK RLQDSWEDAA ILLSNTSQAT
LGPEHLMPS TYVARVRTRL APGSRLSGRP SKWSPEVCWD SQPGDEAQPQ NLECFDGA
VLSCSWEVRK EVASSVSFGL FYKPSPDAGE EECSPVLRG LGS LHTRRHC QIPVPDPATH
GQYIVSVQPR RAEKHIKSSV NIQMAPP SLN VTKDGDSYSL RWETMKMRYE HIDHTFEIQY
RKDTATWKDS KTETLQNAHS MALPALEPST RYWARVRVRT SRTGYNGIWS EWSEARSWDT
ESVLP MWLEH HHHHH

Molecular weight: 49.7 kDa (435aa)

Storage:

Store undiluted at 2-8°C for one week or (in aliquots) at -20°C to -80°C for longer.

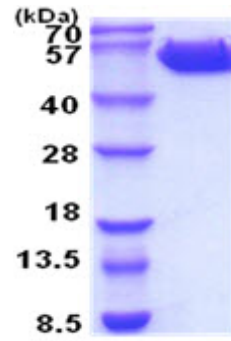
Avoid repeated freezing and thawing.

Shelf life: one year from despatch.

General Readings:

Hansen G., et al. (2008) Cell. 134:496-507. Mulhern TD., et al. (2000) J Mol Biol. 297:989-1001.

Pictures:



15% SDS-PAGE (3ug)