

AR51816PU-N**Human PCOLCE (26-449, His-tag) - Purified****Alternate names:**

PCPE-1, PCPE1, Procollagen C-endopeptidase enhancer 1, Procollagen C-proteinase enhancer 1, Procollagen COOH-terminal proteinase enhancer 1, Type 1 procollagen C-proteinase enhancer protein, Type I procollagen COOH-terminal proteinase enhancer

Quantity:

0.5 mg

Concentration:

1.0 mg/ml (determined by Bradford assay)

Background:

PCOLCE also known as procollagen C-endopeptidase enhancer 1. PCOLCE binds to the C-terminal propeptide of type I procollagen and enhances procollagen C-proteinase activity and C-terminal processed part of PCPE (CT-PCPE) may have a metalloproteinase inhibitory activity. Recombinant human PCOLCE, fused to His-tag at N-terminus, was expressed in E.coli

Uniprot ID:

[Q15113](#)

NCBI:

[NP_002584](#)

GeneID:

[5118](#)

Species:

Human

Source:

E. coli

Format:

State: Liquid purified protein

Purity: >85% by SDS - PAGE

Buffer System: 20 mM Tris-HCl buffer (pH 8.0) containing 10% glycerol.

Description:**AA Sequence:**

MGSSHHHHHH SGLVPRGSH MGSQTPNYTR PVFLCGGDVK GESGYVASEG FPNLYPPNKE
CIWTITVPEG QTVSLSRVF DLELHPACRY DALEVFAGSG TSGQRLGRFC GTFRPAPLVA
PGNQVTLRMT TDEGTGGRGF LLWYSGRATS GTEHQFCGGR LEKAQGLTT PNWPESDYPP
GISCSWHIIA PPDQVIALTF EKFDLEPDTY CRYDSVSVFN GAVSDDSRRL GKFCGDAVPG
SISSEGNELL VQFVSDLSVT ADGFSASYKT LPRGTAKGQ GPGPKRGTEP KVKLPPKSQP
PEKTEESPSA PDAPTCPKQC RRTGTLQSNF CASSLVVTAT VKSMVREPGE GLAVTVSLIG
AYKTGGLDLP SPPTGASLKF YVPCKQCPPM KKGVSYLMLG QVEENRGPVL PPESFVVLHR
PNQDQILTNL SKRKCPSQPV RAAASQD

Molecular weight: 47.9 kDa (447aa)

Storage:

Store undiluted at 2-8°C for one week or (in aliquots) at -20°C to -80°C for longer.

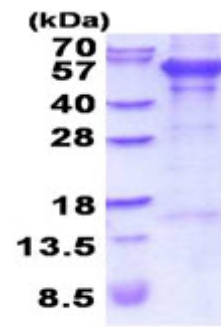
Avoid repeated freezing and thawing.

Shelf life: one year from despatch.

General Readings:

Liepinsh E. et al. (2003) J. Biol. Chem. 278:25982-25989.

Pictures:



15% SDS-PAGE (3ug)