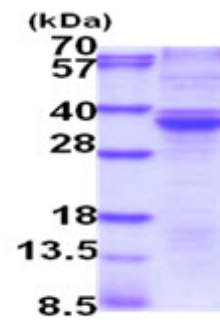


AR51794PU-N**Human RASD2 / TEM2 (1-266, His-tag) - Purified**

Alternate names:	GTP-binding protein Rhes, Ras homolog enriched in striatum, Tumor endothelial marker 2
Quantity:	0.5 mg
Concentration:	0.5 mg/ml (determined by Bradford assay)
Background:	RASD2 also known as GTP-binding protein Rhes This Protein binds to GTP and possesses intrinsic GTPase activity. The RASD2 belongs to the Ras super family of small GTPases. The exact function of this gene is unknown, but most striatum-specific mRNAs characterized to date encode components of signal transduction cascades.
Uniprot ID:	Q96D21
NCBI:	NP_055125
GeneID:	23551
Species:	Human
Source:	E. coli
Format:	State: Liquid purified protein Purity: >85% by SDS - PAGE Buffer System: Liquid, In 20mM Tris-HCl (pH8.0) containing 10% glycerol.
Description:	Recombinant human RASD2, fused to His-tag at N-terminus, was expressed in E.coli. AA Sequence: MGSSHHHHHH SGLVPRGSH MGSMMKTLSS GNCTLSVPAK NSYRMVVLGA SRVGKSSIVS RFLNGRFEDQ YPTTIEDFHR KVYNIRGDMY QLDILDTSGN HFPFAMRRLS ILTGDFVILV FSLDNRESFD EVKRLQKQIL EVKSKLKNKT KEAAELPMVI CGNKNDHGEL CRQVPTTEAE LLVSGDENCA YFEVSAKKNT NVDEMFYVLF SMAKLPHEMS PALHRKISVQ YGDAFHPRPF CMRRVKEMDA YGMVSPFARR PSVNSDLKYI KAKVLRGQA RERDKCTIQ Molecular weight: 32.8 kDa (289aa)
Storage:	Store undiluted at 2-8°C for one week or (in aliquots) at -20°C to -80°C for longer. Avoid repeated freezing and thawing. Shelf life: one year from despatch.
General Readings:	St Croix B., et al. (2000) Science, 289 (5482): 1197–202.

Pictures:



15% SDS-PAGE (3ug)