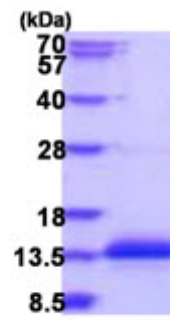


**AR51713PU-N****Human CCDC23 (1-66, His-tag) - Purified**

<b>Alternate names:</b>	Coiled coil domain containing protein 23, Coiled-coil domain-containing protein 23, MGC45441
<b>Quantity:</b>	0.5 mg
<b>Concentration:</b>	0.5 mg/ml (determined by Bradford assay)
<b>Background:</b>	CCDC23 (coiled-coil domain containing 23) is a 66 amino acid protein encoded by a gene mapping to human chromosome 1. Chromosome 1 is the largest human chromosome spanning about 260 million base pairs and making up 8% of the human genome. There are about 3,000 genes on chromosome 1, and considering the great number of genes there are also a large number of diseases associated with chromosome 1. Diseases associated with CCDC23 include endotheliitis.
<b>Uniprot ID:</b>	<a href="#">Q8N300</a>
<b>NCBI:</b>	<a href="#">NP_955374</a>
<b>GeneID:</b>	<a href="#">374969</a>
<b>Species:</b>	Human
<b>Source:</b>	E. coli
<b>Format:</b>	<b>State:</b> Liquid purified protein <b>Purity:</b> >90% by SDS - PAGE <b>Buffer System:</b> Phosphate Buffered Saline (pH7.4) containing 20% glycerol, 1mM DTT.
<b>Description:</b>	Recombinant human CCDC23 protein, fused to His-tag at N-terminus, was expressed in E.coli and purified by using conventional chromatography. <b>AA Sequence:</b> MGSSHHHHHH SGLVPRGSH MGSEFMDPPA RKEKTKVKES VSRVEKAKQK SAQQELKQRQ RAEIYALNRV MTELEQQQFD EFCKQMPPG E <b>Molecular weight:</b> 10.5 kDa (91aa) confirmed by MALDI-TOF
<b>Storage:</b>	Store undiluted at 2-8°C for one week or (in aliquots) at -20°C to -80°C for longer. Avoid repeated freezing and thawing. Shelf life: one year from despatch.
<b>General Readings:</b>	Watson, M.L. et al. (1990) J.Exp. Med. 172: 263-272. Blackwood, D.H. et al. (2001) Am. J. Hum.Genet.. 69: 428-433.

Pictures:



15% SDS-PAGE (3ug)