

AR51630PU-N**glk (1-321, His-tag) - Purified****Alternate names:**

ECK2384, Glucokinase, JW2385

Quantity:

0.5 mg

Concentration:

1.0 mg/ml (determined by Bradford assay)

Background:

glk belongs to the bacterial glucokinase family. This protein is not highly important in E.coli as glucose is transported into the cell by the PTS system already as glucose 6-phosphate.

Uniprot ID:[P0A6V8](#)**NCBI:**[NP_416889](#)**GeneID:**[946858](#)**Source:**

E. coli

Format:**State:** Liquid purified protein**Purity:** >95% by SDS - PAGE**Buffer System:** 20 mM Tris-HCl buffer (pH 8.0) containing 0.15M NaCl, 10% glycerol**Description:**

Recombinant E.coli glk protein, fused to His-tag at N-terminus, was expressed in E.coli and purified by using conventional chromatography techniques.

AA Sequence:

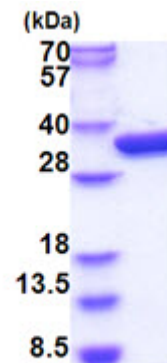
MGSSHHHHH SSGLVPRGSH MGSMTKYALV GDVGGTNARL ALCDIASGEI SQAKTYSGLD
YPSLEAVIRV YLEEHKVEVK DGCIAIACPI TGDWVAMTNH TWAFSIAEMK KNLGFSHLEI
INDFTAVSMA IPMLKKEHLI QFGGAEPVEG KPIAVYGAGT GLGVAHLVHV DKRWVSLPGE
GGHVDFAPNS EEEAIILEIL RAEIGHVSAE RVLSGPGLVN LYRAIVKADN RLPENLKPDK
ITERALADSC TDCRRALSLF CVIMGRFGGN LALNLGTFGG VFIAGGIVPR FLEFFKASGF
RAAFEDKGRF KEYVHDIPVY LIVHDNPGLL GSGAHLRQTL GHIL

Molecular weight: 37.1 kDa (344aa) confirmed by MALDI-TOF**Storage:**

Store undiluted at 2-8°C for one week or (in aliquots) at -20°C to -80°C for longer. Avoid repeated freezing and thawing. Shelf life: one year from despatch.

General Readings:

Kawai S, Mukai T, et al. (2005) J. Biosci. Bioeng. 99 (4): 320-30.

Pictures:

15% SDS-PAGE (3ug)