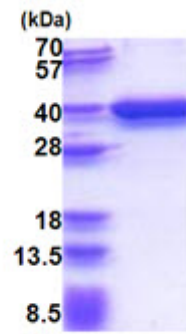


**AR51468PU-S****Human RPRD1A (1-312, His-tag) - Purified**

<b>Alternate names:</b>	Cyclin-dependent kinase inhibitor 2B-related protein, P15RS, Regulation of nuclear pre-mRNA domain-containing protein 1A, p15INK4B-related protein
<b>Quantity:</b>	0.1 mg
<b>Concentration:</b>	0.5 mg/ml (determined by BRADFORD assay)
<b>Background:</b>	RPRD1A is upregulated in cells overexpressing cyclin-dependent kinase inhibitor p15(INK4b) and may have a role in cell cycle regulation
<b>Uniprot ID:</b>	<a href="#">Q96P16</a>
<b>NCBI:</b>	<a href="#">NP_060640</a>
<b>GeneID:</b>	<a href="#">55197</a>
<b>Species:</b>	Human
<b>Source:</b>	E. coli
<b>Format:</b>	<b>State:</b> Liquid purified protein <b>Purity:</b> >95% by SDS - PAGE <b>Buffer System:</b> 20 mM Tris-HCl buffer (pH 8.0) containing 0.15M NaCl, 20% glycerol, 1mM DTT
<b>Description:</b>	Recombinant human RPRD1A protein, fused to His-tag at N-terminus, was expressed in E.coli and purified by using conventional chromatography techniques. <b>AA Sequence:</b> MGSSHHHHH SSGLVPRGSH MGSEFMSAFS EAAL EKKLSE LSNSQQSVQT LSLWLIHHRK HSRP I V T W E RELRKAKPNR KLTFLYLAND VIQNSKRKGP EFTKDFAPVI V EAFKHVSSE TDESCKKHLG RVL SIWEERS VYENDVLEQL KQALYGDKKP RKRTYEQIKV DENENCSSLG SPSEPPQTL D LVRALQDLEN AASGDAAVHQ RIASLPVEVQ EVSLLDKITD KESGERLSKM VEDACMLLAD YNGRLAAEID DRKQLTRMLA DFLRCQKEAL AEKEHKLEEY KRKLARVSLV RKELRSRIQS LPDLSRLPNV TGSHMHL PFA GDIYSED <b>Molecular weight:</b> 38.4 kDa (337aa) confirmed by MALDI-TOF
<b>Storage:</b>	Store undiluted at 2-8°C for one week or (in aliquots) at -20°C to -80°C for longer. Avoid repeated freezing and thawing. Shelf life: one year from despatch.
<b>General Readings:</b>	Liu J., Liu H., Zhang X., et al. (2002) Biochem. Biophys. Res. Commun. 299:880-885 Ni Z., Olsen J.B., et al. (2011) Transcription 2:237-242

Pictures:



15% SDS-PAGE (3ug)