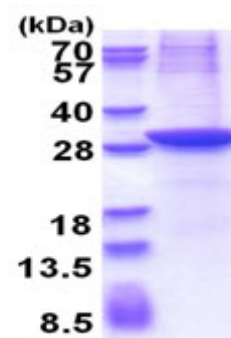


AR51463PU-S**Human ACAM / ASAM (19-235, His-tag) - Purified**

Alternate names:	Adipocyte adhesion molecule, CLMP
Quantity:	0.1 mg
Concentration:	0.5 mg/ml (determined by Bradford assay)
Background:	The CTX family of proteins, including ASAM, are type I transmembrane proteins within the Ig superfamily that localize to junctional complexes between endothelial and epithelial cells and may play a role in cell-cell adhesion.
Uniprot ID:	Q9H6B4
NCBI:	NP_079045
GeneID:	79827
Species:	Human
Source:	E. coli
Format:	State: Liquid purified protein Purity: >90% by SDS - PAGE Buffer System: 20 mM Tris-HCl buffer (pH 8.0) containing 0.4M UREA, 10% glycerol
Description:	Recombinant human CLMP protein, fused to His-tag at N-terminus, was expressed in E.coli. AA Sequence: MASMTGGQQM GRGSHMTHTE IKRVAEEKVT LPCHHQLGLP EKDTLDIEWL LTDNEGNQKV VITYSSRHVY NNLTEEQKGR VAFASNFLAG DASLQIEPLK PSDEGRYTCK VKNSGRYVWS HVILKVLVRP SKPKCELEGE LTEGSDLTLQ CESSSGTEPI VYYWQRIREK EGEDERLPPK SRIDYNHPGR VLLQNLTMSY SGLYQCTAGN EAGKESCVVR VTVQYVQSIG MVA Molecular weight: 26.1 kDa (233aa)
Storage:	Store undiluted at 2-8°C for one week or (in aliquots) at -20°C to -80°C for longer. Avoid repeated freezing and thawing. Shelf life: one year from despatch.
General Readings:	Kolawole,A.O, et al. (2012) J. Virol. 86 (17), 9244-9254 Van Der Werf., et al. (2012) Gastroenterology 142 (3), 453-462

Pictures:

15% SDS-PAGE (3µg)