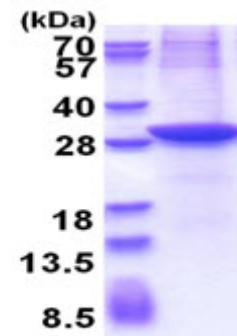


AR51463PU-N**Human ACAM / ASAM (19-235, His-tag) - Purified**

| | |
|--------------------------|---|
| Alternate names: | Adipocyte adhesion molecule, CLMP |
| Quantity: | 0.5 mg |
| Concentration: | 0.5 mg/ml (determined by Bradford assay) |
| Background: | The CTX family of proteins, including ASAM, are type I transmembrane proteins within the Ig superfamily that localize to junctional complexes between endothelial and epithelial cells and may play a role in cell-cell adhesion. |
| Uniprot ID: | Q9H6B4 |
| NCBI: | NP_079045 |
| GeneID: | 79827 |
| Species: | Human |
| Source: | E. coli |
| Format: | State: Liquid purified protein Purity: >90% by SDS - PAGE Buffer System: 20 mM Tris-HCl buffer (pH 8.0) containing 0.4M UREA, 10% glycerol |
| Description: | Recombinant human CLMP protein, fused to His-tag at N-terminus, was expressed in E.coli. AA Sequence: MASMTGGQQM GRGSHMTHTE IKRVAEEKVT LPCHHQLGLP EKDTLDIEWL LTDNEGNQKV VITYSSRHVY NNLTEEQKGR VAFASNFLAG DASLQIEPLK PSDEGRYTCK VKNSGRYVWS HVILKVLVRP SKPKCELEGE LTEGSDLTLQ CESSSGTEPI VYYWQRIREK EGEDERLPPK SRIDYNHPGR VLLQNLTMSY SGLYQCTAGN EAGKESCVVR VTVQYVQSIG MVA Molecular weight: 26.1 kDa (233aa) |
| Storage: | Store undiluted at 2-8°C for one week or (in aliquots) at -20°C to -80°C for longer. Avoid repeated freezing and thawing. Shelf life: one year from despatch. |
| General Readings: | Kolawole,A.O, et al. (2012) J. Virol. 86 (17), 9244-9254 Van Der Werf., et al. (2012) Gastroenterology 142 (3), 453-462 |

Pictures:

15% SDS-PAGE (3µg)