

**AR50968PU-S****glpE (1-108, His-tag) - Purified****Alternate names:**

ECK3411, JW3388, Thiosulfate:cyanide sulfurtransferase (rhodanese)

**Quantity:**

0.1 mg

**Concentration:**

0.5mg/ml (determined by Bradford assay)

**Background:**

Thiosulfate:cyanide sulfurtransferase (rhodanese), also known as glpE, is a mitochondrial matrix enzyme that is encoded by the nucleus. glpE catalyzes the sulfur-transfer reaction in which a sulfur atom is transferred from thiosulfate to cyanide by a double displacement reaction.

**Uniprot ID:**[P0A6V5](#)**NCBI:**[NP\\_417883](#)**GeneID:**[947935](#)**Source:**

E. coli

**Format:****State:** Liquid purified protein**Purity:** >95% by SDS - PAGE**Buffer System:** 20 mM Tris-HCl buffer (pH 8.0) containing 10% glycerol**Description:****AA Sequence:**

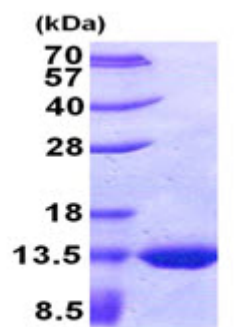
MGSSHHHHHH SSGLVPRGSH MGSMDQFECI NVADAHQKLQ EKEAVLVDIR DPQSFAMGHA  
VQAFHLTNDT LGAFMRDNDP DTPVMVMCYH GNSKGAAY LLQQGYDVVY SIDGGFEAWQ  
RQFPAEVAYG A

**Molecular weight:** 14.5 kDa (131aa), confirmed by MALDI-TOF**Storage:**

Store undiluted at 2-8°C for one week or (in aliquots) at -20°C to -80°C for longer. Avoid repeated freezing and thawing. Shelf life: one year from despatch.

**General Readings:**

Li H., et al. (2011) Biomol NMR Assign. 5(1):97-99 Ray WK., et al. (2000) J Bacteriol. 182(8):2277-84.

**Pictures:**

15% SDS-PAGE (3ug)