

AR50937PU-S**Human FBLIM1 (1-373, His-tag) - Purified****Alternate names:**

FBLP-1, FBLP1, Filamin-binding LIM protein 1, MIG2-interacting protein, Migfilin, Mitogen-inducible 2-interacting protein

Quantity:

20 µg

Concentration:

0.25 mg/ml (determined by Bradford assay)

Background:

Filamin binding LIM protein 1, also known as FBLIM1, serves as an anchoring site for cell-ECM adhesion proteins and filamin-containing actin filaments. This protein is implicated in cell shape modulation (spreading) and motility. It may participate in the

Uniprot ID:[Q8WUP2](#)**NCBI:**[NP_060026](#)**GeneID:**[54751](#)**Species:**

Human

Source:

E. coli

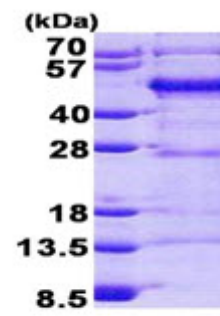
Format:**State:** Liquid purified protein**Purity:** >85% by SDS - PAGE**Buffer System:** 20 mM Tris-HCl buffer (pH 8.0) containing 0.15M NaCl, 10% glycerol, 1mM DTT**Description:****AA Sequence:**MGSSHHHHHH SGLVPRGSH MGSMASKPEK RVASSVFITL APPRRDVAVA EEVRQAVCEA
RRGRPWEEAPA PMKTPEAGLA GRPSPWTPG RAAATVPAAP MQLFNGGCPP PPPVLDGEDV
LPDLDLLPPP PPPPVLLPS EEEAPAPMGA SLIADLEQLH LSPPPPPQA PAEGPSVQPG
PLRPMEEELP PPPAEPVEKG ASTDICAFC H KTVSPRELAV EAMKRQYHAQ CFTCRTCRRO
LAGQSFYQKD GRPLCEPCYQ DTLERCGKCG EVVRDHIIRA LGQAFHPSCF TCVTARCIG
DESFALGSQN EVYCLDDFYR KFAPVCSICE NPIIPRDGKD AFKIECMGRN FHENCYRCED
CRILLSVEPT DQGCYPLNNH LFCKPCHVKR SAAGCC**Molecular weight:** 43.1 kDa (396aa), confirmed by MALDI-TOF**Storage:**

Store undiluted at 2-8°C for one week or (in aliquots) at -20°C to -80°C for longer. Avoid repeated freezing and thawing. Shelf life: one year from despatch.

General Readings:

Tu Y., et al. (2003) Cell. 113:37-47 Takafuta T., et al. (2003) J. Biol. Chem. 278:12175-12181

Pictures:



15% SDS-PAGE (3ug)