

AR50926PU-S**Human RPL23A (1-156, His-tag) - Purified****Alternate names:**

60S ribosomal protein L23a

Quantity:

50 µg

Concentration:

0.5 mg/ml (determined by Bradford assay)

Background:

Ribosomes, the organelles that catalyze protein synthesis, consist of a small 40S subunit and a large 60S subunit. Together these subunits are composed of 4 RNA species and approximately 80 structurally distinct proteins. RPL23A is a ribosomal protein that is a component of the 60S subunit. The protein belongs to the L23P family of ribosomal proteins. It is located in the cytoplasm. The protein may be one of the target molecules involved in mediating growth inhibition by interferon. In yeast, the corresponding protein binds to a specific site on the 26S rRNA.

Uniprot ID:[P62750](#)**NCBI:**[NP_000975](#)**GeneID:**[6147](#)**Species:**

Human

Source:

E. coli

Format:**State:** Liquid purified protein**Purity:** >80% by SDS - PAGE**Buffer System:** 20 mM Tris-HCl buffer (pH 8.0) containing 0.2M NaCl, 50% glycerol, 2mM DTT, 250mM imidazole**Description:**

Recombinant human RPL23A protein, fused to His-tag at N-terminus, was expressed in E.coli and purified by using conventional chromatography techniques.

AA Sequence:

MGSSHHHHHH SSGLVPRGSH MGSMAKAKK EAPAPPKAEA KAKALKAKKA VLKGVHSHKK
KKIRTSPFTR RPKTLRLRRQ PKYPRKSAPR RNKLDHYAII KFPLTTESAM KKIEDNNTLV
FIVDVKANKH QIKQAVKKLY DIDVAKVNTL IRPDGEKKAY VRLAPDYDAL DVANKIGII

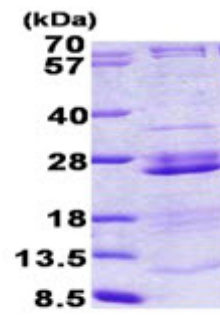
Molecular weight: 20.1 kDa (179aa) confirmed by MALDI-TOF**Storage:**

Store undiluted at 2-8°C for one week or (in aliquots) at -20°C to -80°C for longer. Avoid repeated freezing and thawing. Shelf life: one year from despatch.

General Readings:

Choudhary C., et al. (2009) Science. 325:834-840 Wang B., et al. (2008) Anal. Chem. 80:9526-9533

Pictures:



15% SDS-PAGE (3ug)