

AR50903PU-S**Human RPS13 (1-151, His-tag) - Purified****Alternate names:**

40S ribosomal protein S13

Quantity:

0.1 mg

Concentration:

0.25 mg/ml (determined by Bradford assay)

Background:

40S ribosomal protein S13, also known as RPS13, belongs to the ribosomal protein S15P family. Ribosomes, the organelles that catalyze protein synthesis, consist of a small 40S subunit and a large 60S subunit. RPS13 is located in the cytoplasm and contains multiple phosphorylated residues. Like most ribosomal proteins, Ribosomal Protein S13 exists as multiple processed pseudogenes that are scattered throughout the genome.

Uniprot ID:[P62277](#)**NCBI:**[NP_001008](#)**GeneID:**[6207](#)**Species:**

Human

Source:

E. coli

Format:**State:** Liquid purified protein**Purity:** >80% by SDS - PAGE**Buffer System:** 20 mM Tris-HCl buffer (pH 8.0) containing 0.2M NaCl, 50% glycerol, 2mM DTT**Description:**

Recombinant human RPS13 protein, fused to His-tag at N-terminus, was expressed in E.coli and purified by using conventional chromatography techniques.

AA Sequence:

MGSSHHHHHH SGLVPRGSH MGSMDRMHAP GKGLSQSALP YRRSVPTWLK LTSDDVKEQI
YKLAKKGLTP SQIGVILRDS HGVAQVRFVT GNKILRILKS KGLAPDLPED LYHLIKKAVA
VRKHLERNRK DKDAKFRLLI IESRIHRLAR YYKTKRVLPP NWKYESSTAS ALVA

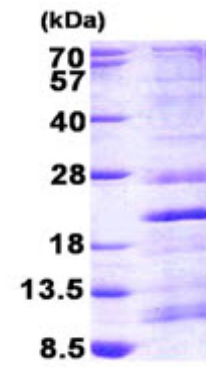
Molecular weight: 19.6 kDa (174aa) confirmed by MALDI-TOF**Storage:**

Store undiluted at 2-8°C for one week or (in aliquots) at -20°C to -80°C for longer. Avoid repeated freezing and thawing. Shelf life: one year from despatch.

General Readings:

Shi Y., et al. (2004) Exp Cell Res. 296:337-346 Malygin A., et al. (2005) Biochim Biophys Acta. 1747:93-97.

Pictures:



15% SDS-PAGE (3ug)