

**AR50891PU-S****Human ROBLD3 (1-125, His-tag) - Purified****Alternate names:**

Endosomal adaptor protein p14, HSPC003, Late endosomal/lysosomal Mp1-interacting protein, MAPBPIP, Mitogen-activated protein-binding protein-interacting protein, Roadblock domain-containing protein 3

**Quantity:**

50 µg

**Concentration:**

0.25 mg/ml (determined by Bradford assay)

**Background:**

LAMTOR2 is highly conserved with a mouse protein associated with the cytoplasmic face of late endosomes and lysosomes. The mouse protein interacts with MAPK scaffold protein 1, a component of the mitogen-activated protein kinase pathway. In humans, a mutation in this gene has been associated with a primary immunodeficiency syndrome, and suggests a role for this protein in endosomal biogenesis.

**Uniprot ID:**[Q9Y2Q5](#)**NCBI:**[NP\\_054736](#)**GeneID:**[28956](#)**Species:**

Human

**Source:**

E. coli

**Format:****State:** Liquid purified protein**Purity:** >90% by SDS - PAGE**Buffer System:** 20 mM Tris-HCl buffer (pH 8.0) containing 0.15M NaCl, 10% glycerol, 1mM DTT**Description:**

Recombinant human LAMTOR2 protein, fused to His-tag at N-terminus, was expressed in E.coli and purified by using conventional chromatography techniques.

**AA Sequence:**

MGSSHHHHHH SSGLVPRGSH MGSMLRPKAL TQVLSQANTG GVQSTLLLNN EGSLLAYSGY  
GDTDARVTAA IASNIWAAYD RNGNQAFNED NLKFILMDCM EGRVAITRVA NLLLCMYAKE  
TVGFGLKAK AQALVQYLEE PLTQVAAS

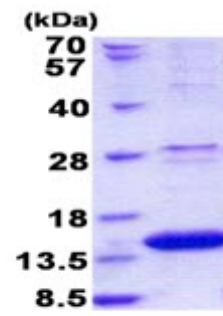
**Molecular weight:** 15.9 kDa (148aa) confirmed by MALDI-TOF**Storage:**

Store undiluted at 2-8°C for one week or (in aliquots) at -20°C to -80°C for longer. Avoid repeated freezing and thawing. Shelf life: one year from despatch.

**General Readings:**

Bohn G., et al. (2007) Nat. Med. 13:38-45Sancak Y., et al. (2010) Cell. 141:290-303

Pictures:



15% SDS-PAGE (3ug)