

AR50891PU-N

Human ROBLD3 (1-125, His-tag) - Purified

Alternate names:

Endosomal adaptor protein p14, HSPC003, Late endosomal/lysosomal Mp1-interacting protein, MAPBPIP, Mitogen-activated protein-binding protein-interacting protein, Roadblock domain-containing protein 3

Quantity:

0.25 mg

Concentration:

0.25 mg/ml (determined by Bradford assay)

Background:

LAMTOR2 is highly conserved with a mouse protein associated with the cytoplasmic face of late endosomes and lysosomes. The mouse protein interacts with MAPK scaffold protein 1, a component of the mitogen-activated protein kinase pathway. In humans, a mutation in this gene has been associated with a primary immunodeficiency syndrome, and suggests a role for this protein in endosomal biogenesis.

Uniprot ID:

[Q9Y2Q5](#)

NCBI:

[NP_054736](#)

GenelD:

[28956](#)

Species:

Human

Source:

E. coli

Format:

State: Liquid purified protein

Purity: >90% by SDS - PAGE

Buffer System: 20 mM Tris-HCl buffer (pH 8.0) containing 0.15M NaCl, 10% glycerol, 1mM DTT

Description:

Recombinant human LAMTOR2 protein, fused to His-tag at N-terminus, was expressed in E.coli and purified by using conventional chromatography techniques.

AA Sequence:

MGSSHHHHHH SSGLVPRGSH MGSMLRPKAL TQVLSQANTG GVQSTLLNN EGSLLAYSGY
GDTDARVTAA IASNIWAAYD RNGNQAFNED NLKFILMDCM EGRVAITRVA NLLLCMYAKE
TVGFGLKAK AQALVQYLEE PLTQVAAS

Molecular weight: 15.9 kDa (148aa) confirmed by MALDI-TOF

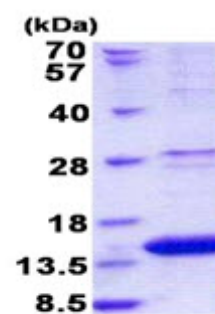
Storage:

Store undiluted at 2-8°C for one week or (in aliquots) at -20°C to -80°C for longer. Avoid repeated freezing and thawing. Shelf life: one year from despatch.

General Readings:

Bohn G., et al. (2007) Nat. Med. 13:38-45Sancak Y., et al. (2010) Cell. 141:290-303

Pictures:



15% SDS-PAGE (3ug)