

AR50862PU-S**Human MRM1 (21-353, His-tag) - Purified****Alternate names:**

Mitochondrial large ribosomal RNA ribose methylase, mitochondrial, rRNA methyltransferase 1

Quantity:

50 µg

Concentration:

0.25 mg/ml (determined by Bradford assay)

Background:

Mitochondrial rRNA methyltransferase 1 homolog, also known as MRM1, probably methylates the ribose of guanosine G-2270 in the peptidyl transferase center of the mitochondrial large ribosomal RNA (21S).

Uniprot ID:[Q6IN84](#)**NCBI:**[NP_079140](#)**GeneID:**[79922](#)**Species:**

Human

Source:

E. coli

Format:**State:** Liquid purified protein**Purity:** >90% by SDS - PAGE**Buffer System:** 20 mM Tris-HCl buffer (pH 8.0) containing 0.15M NaCl, 30% glycerol, 1mM DTT, 0.1mM PMSF**Description:**

Recombinant human MRM1 protein, fused to His-tag at N-terminus, was expressed in E.coli and purified by using conventional chromatography techniques.

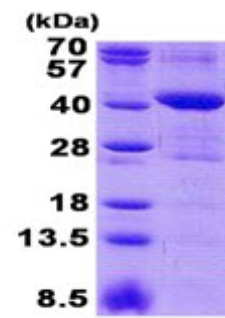
AA Sequence:MGSSHHHHHH SSGLVPRGSH MGSSHAARHG ERPGGEELSR LLLDDLVPST RLELLFGMTP
CLLALQAARR SVARLLLQAG KAGLQKRAE LLRMAEARDI PVLRRRQKL DTMCRYQVHQ
GVCMEVSPLR PRPWREAGEA SPGDDPQQLW LVLDDGIQDPR NFGAVLRS AH FLGVDKIVTS
RRNSCPLTPV VSKSSAGAME VMDVFSTDDL TGFLQTKAQQ GWLVAGTVGC PSTEDPQSSE
IPIMSCLEFL WERPTLLVLG NEGSGLSQEV QASCQLLLTI LPRRQLPPGL ESLNVSVAAG
ILLHSICSQR KGFPTGERR QLLQDPQEPS ARSEGLSMAQ HPGLSSGPEK ERQNEG**Molecular weight:** 38.8 kDa (356aa) confirmed by MALDI-TOF**Storage:**

Store undiluted at 2-8°C for one week or (in aliquots) at -20°C to -80°C for longer. Avoid repeated freezing and thawing. Shelf life: one year from despatch.

General Readings:

Ota T., et al. (2004) Nat. Genet. 36:40-45

Pictures:



15% SDS-PAGE (3ug)